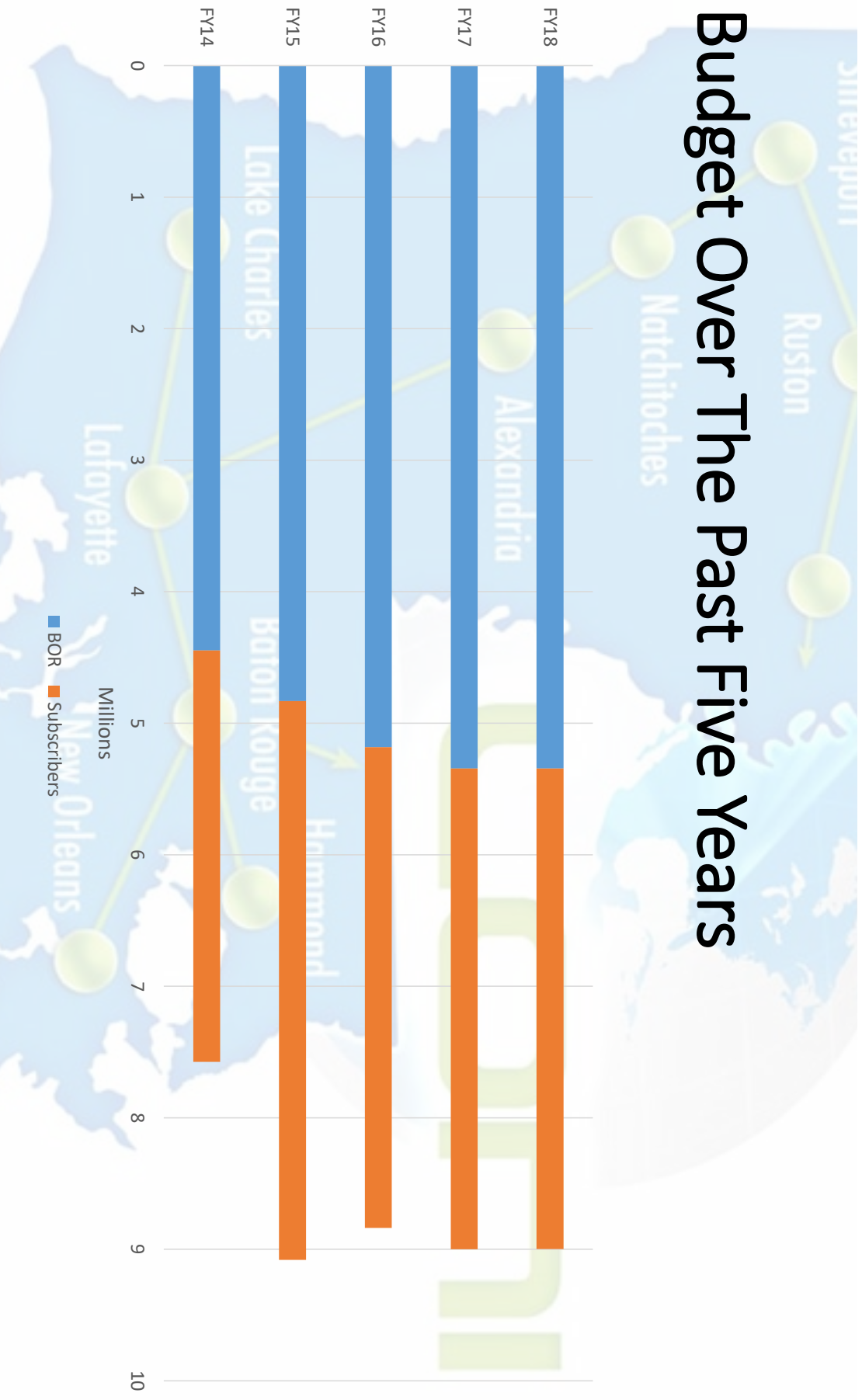


# Louisiana Optical Network Infrastructure (LONI)



BOR – Board Budget Hearing, 9/26/17

# Budget Over The Past Five Years



# Significant Accomplishments

FY17-18 – Phase-1 constructed over 297,000 feet of Regents owned fiber optic cable in the metro areas of Baton Rouge, Hammond, Lafayette, Lake Charles, Monroe, Ruston, and Shreveport.



# Significant Projects

- FY19 – Queen Bee Replacement, Fiber Construction, Optical Equipment Replacement
- FY18 – Fiber Construction to Grambling and other entities, Optical Equipment Replacement
- FY17 – Fiber Construction, Optical Equipment Replacement
- FY16 – Optical Equipment Replacement
- FY15 – Queen Bee Replacement
- FY14 – Internet Equipment Replacement



# Governance Statement

LONI is the, unique, publicly funded integrated statewide high-capacity middle-mile fiber optic network and high-performance computing infrastructure. Strategic direction of LONI is the responsibility of the Louisiana Board of Regents.





# Management Statement

The LONI Management Council has oversight of the strategic and operational goals of LONI in support of its scientific, academic, and economic development endeavors. The Management Council will develop, and recommend strategic and operational goals and policies, and procedures to the Commissioner of Higher Education.

# LONI Operations Statement

The LONI operations is created through a contract between the Board of Regents and the Louisiana State University and A&M College. Under this contract agreement, LSU is the fiduciary and responsible agent of the day-to-day operational events of LONI.



# Value Statement

LONI seeks to provide business value to its subscribers through accountability, collaboration, and transparency.





# Funding Statement



LONI is a Louisiana Board of Regents project funded by state appropriations, subscriber's contributions, and grant awards.

# Mission Statement

LONI seeks to provide value to its subscriber's business through innovative and practical delivery of network-as-a-service (Naas) and infrastructure-as-a-service (IaaS).



# Business Model

LONI's annual budget is made up of two main units, Personnel and Operations. The Personnel Budget is funded 100% from the Board of Regents through a contract with the Louisiana State University and A&M College known as the LONI Operations. The Operations Budget is a set of baseline service (Naas and Iaas) recovered from our subscribers through a model approved by the LONI Management Council as well as special projects not fitting for the model. The funding for strategic hardware lifecycle items like the network and HPC are managed by the Board of Regents through financing options from the State of Louisiana.



# Five Themes

- 1) Trust
- 2) Relevant
- 3) Sustainability
- 4) Integration
- 5) Investment



# Five Targets

- 1) High-Performance Cyber-Infrastructure (Naas and IaaS)
- 2) Shared Support Services
- 3) Research and Development Support
- 4) Business Development Support
- 5) Teaching and Learning Support



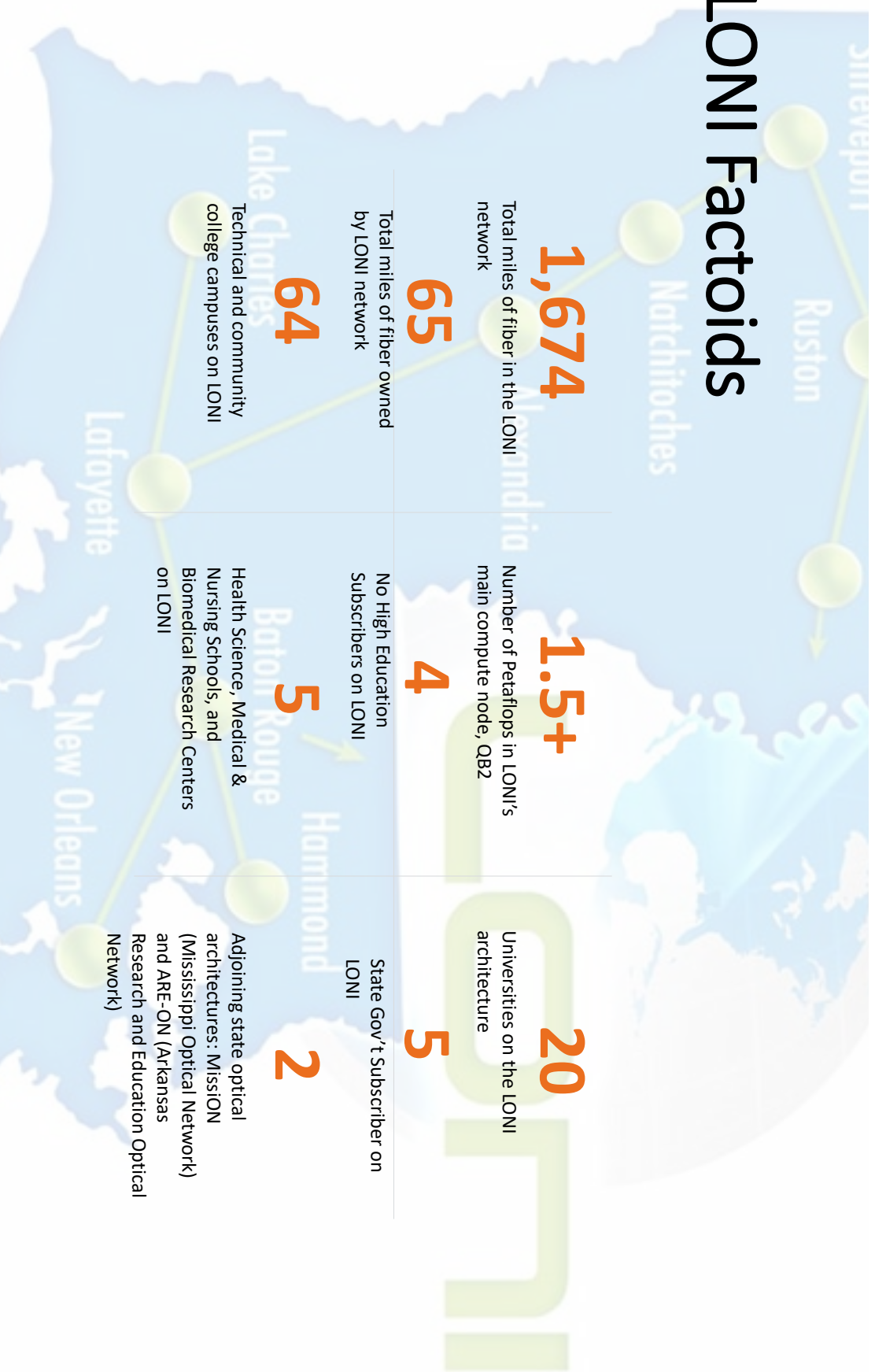


# What we do

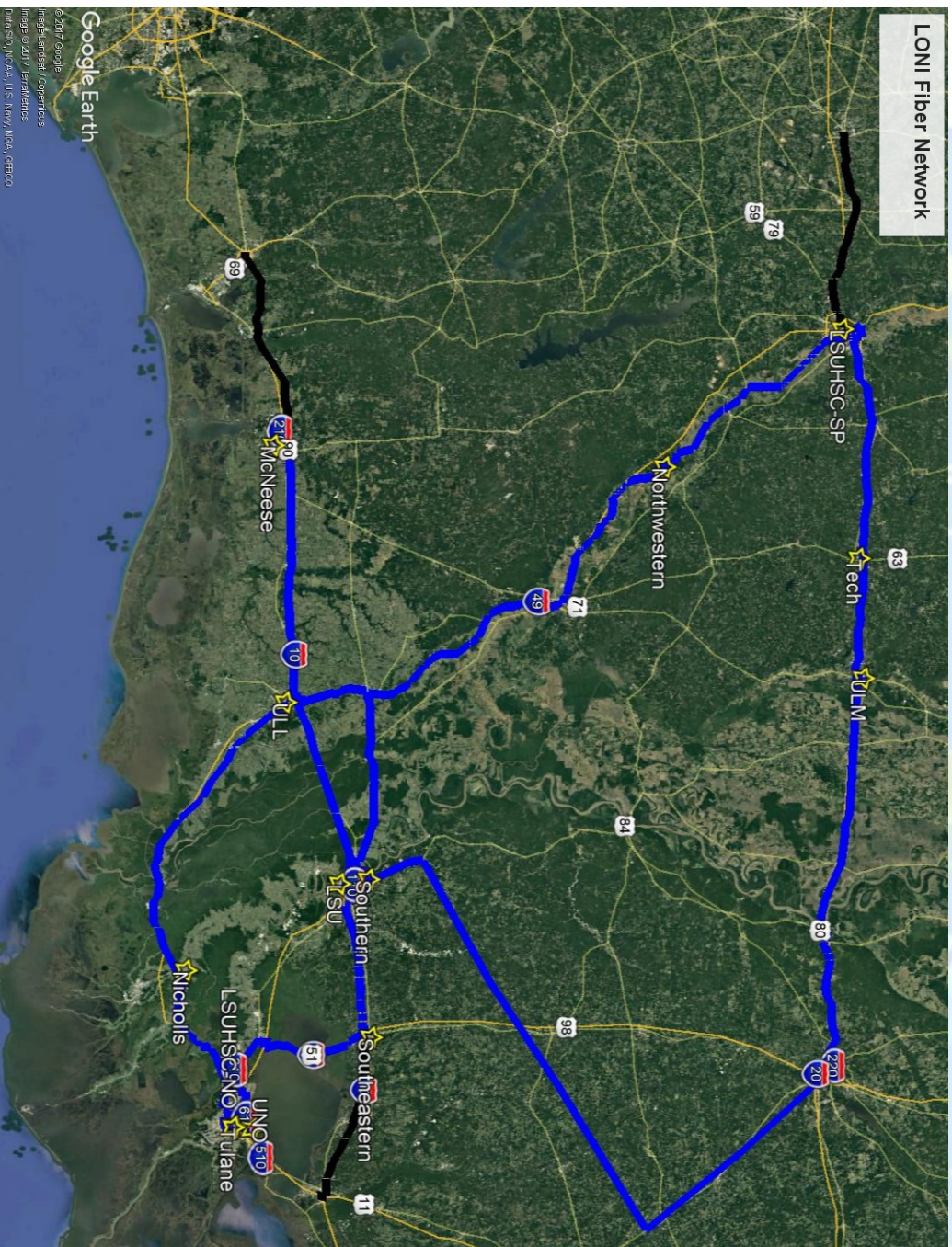
LONI offers its subscribers a world-class network and high performance computing environment with the strategic integration of highly available and scalable bandwidth, as well as computational, storage and personnel resources.



# LONI Factoids








**NETWORK NODES**

*Louisiana*

- Louisiana State University
- Louisiana State University Health, Medical, and Biomedical Centers
- Tulane University
- Louisiana Tech University
- University of Louisiana-Lafayette
- University of New Orleans
- Southern University
- University of Louisiana-Monroe
- Grambling State University
- McNeese State University
- Nicholls State University
- Northwestern State University
- Southeastern Louisiana University
- Xavier University
- Community College System: 10 colleges and 40 campuses
- Technical Community Colleges: 4 colleges and 40 campuses
- Research: 1 organizations
- State and Local: 5 agencies

*Mississippi*

- University of Mississippi
- Mississippi State University
- University of Southern Mississippi
- Jackson State University



# Louisiana: a model for advancing regional e- Research through cyberinfrastructure

“This effort to advance Louisiana provides a model for building regional cyberinfrastructure based upon local needs but consistent with and integrating into national-level efforts. It has led to an unprecedented level of partnering between the state's research universities and to the largest amount of per capita computing accessible to the state's researchers. In addition, the ongoing projects to develop software and services and to increase collaboration are building a base that has the potential to transform the state's educational system and economy.”<sup>1</sup>

- (1) Daniel S. Katz, Gabrielle Allen, Ricardo Cortez, Carolina Cruz-Neira, R. Gottumukkala, Z. D. Greenwood, Les Guice, Shantenu Jha, R. Kolluru, Tevi-Kosar, Lonnie Leger, H. Liu, Charlie McMahon, Jarek Nabrzyski, Bety Rodriguez-Milla, Ed Seidel, G. Spe. "Louisiana: A Model for Advancing Regional e-Research through Cyberinfrastructure," Phil. Trans. R. Soc. A, v.28, 2009, p. 1897., doi: [10.1098/rsta.2009.0037](https://doi.org/10.1098/rsta.2009.0037)



## Savings to the Schools

- We save 89 institution sites approximately \$530K annually or \$6.3M over the past 12 years to operate LONI as a statewide consortium network versus each school creating their own.
- We save our participating institutions approximately \$2.4M annually for Internet bandwidth over what is offered from OTS according to their [catalog](#).





# Connect with Us

Lonnie Leger

[lonnie@lsu.edu](mailto:lonnie@lsu.edu)

225-578-8391

Follow us on Twitter: @LONI\_LSU

Like us on Facebook: LONI - Louisiana Optical Network Initiative