



DUAL ENROLLMENT INNOVATION & EQUITY GRANT

HB734 - REPRESENTATIVE BRASS



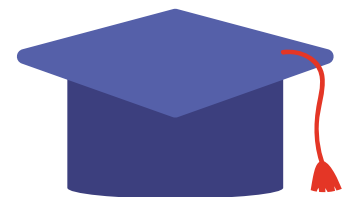
THE GOAL

This bill is the first step in building capacity to establish statewide dual enrollment access in Louisiana. It creates the Innovation and Equity Grant to train additional high school dual enrollment teachers and provide mobile labs, which will increase access in rural communities.

THE CHALLENGE

Of the 88,137 public high school juniors and seniors in Louisiana, only 19,648 students were dually enrolled in 2017-18. Economically disadvantaged students make up 69% of high school enrollment, but only 41% of dual enrollment students. African American students are also underrepresented, making up only 27% of dual enrollment students but 43% of the high school population. It is in the best interest of the state to promote and accelerate cost-saving early college opportunities, especially as many families face economic challenges.

THE STATISTICS



The benefits are clear. Among Louisiana college students who graduate in four years, students who took dual enrollment, on average, graduate one year earlier compared to students with no prior college credit.

¹ Data obtained from Louisiana Department of Education, 2017-18

² SREB State Data Exchange, Tables 56 & 57, 2017-18