

# PERCENT STUDENT STATION UTILIZATION OF OCCUPIED CLASSROOMS AND CLASS LABORATORIES

## TABLE 7

The statistics which reflect percent of student utilization are extremely valuable when planning new facilities. They provide a general guide for the need for various sizes of classrooms and laboratories. The comparison between how well the teaching facilities accommodate the size of the classes being conducted in them is helpful; however, the ratio does not indicate how efficiently the facilities are being used. It must be noted that data in Table 7 only include rooms which are in use (scheduled), and is, therefore, an indication of how the capacity of the room is matched to the number of students in the class.

The percent of student station utilization is derived from the ratio of the total student hours of instruction to the potential student hours of instruction. The total student hours of instruction is defined as the enrollment of the class multiplied by the hours the class meets per day which is then multiplied by the number of days per week the class meets. The potential student hours of instruction is defined as the number of hours that the course meets each week, rounded to the nearest half hour, multiplied by the number of days per week the class meets. This figure is then multiplied by the capacity of the room.

Norm: Classrooms - 60% Student Station Utilization  
Laboratories - 80% Student Station Utilization

$$\text{Percent Student Station Utilization} = \frac{\text{Total Student Hours of Instruction}}{\text{Potential Student Hours of Instruction}}$$

As we continue with the sample data:

ENROLL- MENT	ROOM TYPE	CAPACITY			
33	110	3 days * 1 hour * 33 = 99	50	3 days * 1 hour * 50 = 150	
40	110	2 days * 1.5 hr * 40 = 120	50	2 days * 1.5 hr * 50 = 150	
46	110	3 days * 1 hour * 46 = 138	50	3 days * 1 hour * 50 = 150	
26	110	2 days * 1.5 hr * 26 = 78	50	2 days * 1.5 hr * 50 = 150	
52	110	3 days * 1 hour * 52 = 156	50	3 days * 1 hour * 50 = 150	
45	110	3 days * 1 hour * 45 = 135	50	3 days * 1 hour * 50 = 150	
54	110	2 days * 1.5 hr * 54 = 162	50	2 days * 1.5 hr * 50 = 150	
26	110	3 days * 1 hour * 26 = 78	50	3 days * 1 hour * 50 = 150	

30	110	3 days * 1 hour * 30 = 90	50	3 days * 1 hour * 50 = 150
39	110	2 days * 1.5 hr * 39 = 117	50	2 days * 1.5 hr * 50 = 150
			-----	-----
		TOTALS	1,173	1,500
17	210	1 day * 3 hrs * 17 = 51	24	1 day * 3 hrs * 24 = 72
14	210	1 day * 3 hrs * 14 = 42	24	1 day * 3 hrs * 24 = 72
25	210	3 days * 1 hour * 25 = 75	40	1 day * 3 hrs * 40 = 120
35	210	3 days * 1 hour * 35 = 105	40	1 day * 3 hrs * 40 = 120
30	210	2 days * 1.5 hr * 30 = 90	40	1 day * 3 hrs * 40 = 120
29	210	1 day * 3 hrs * 29 = 87	40	1 day * 3 hrs * 40 = 120
21	210	1 day * 3 hrs * 21 = 63	40	1 day * 3 hrs * 40 = 120
22	210	1 day * 3 hrs * 22 = 66	40	1 day * 3 hrs * 40 = 120
13	210	1 day * 3 hrs * 13 = 39	24	1 day * 3 hrs * 24 = 72
16	210	1 days * 3 hrs * 16 = 48	24	1 day * 3 hrs * 24 = 72
			-----	-----
		TOTALS	666	1,008

Total Student Hours in Classrooms = 1173  
-----  
Capacity in Classrooms = 1500  
----- = .782 or 78%

Total Student Hours in Class Laboratories = 666  
-----  
Capacity in Class Laboratories = 1008  
----- = .660 or 66%

The report for one institution would look like this:

	FTE	CLASSROOMS	LABORATORIES
Institution	5,411	78.2	66.0

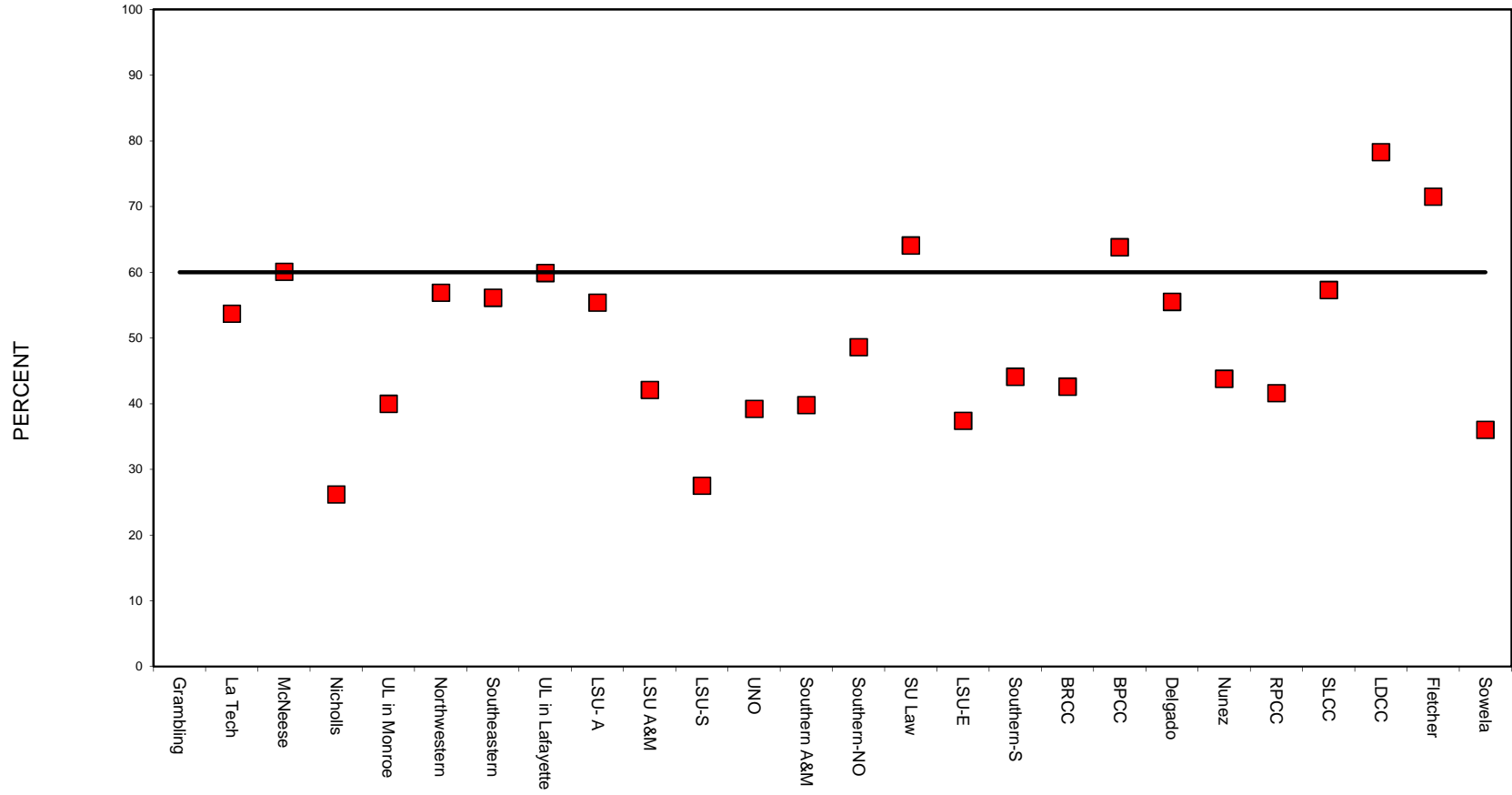
**TABLE 7**  
**PERCENT STUDENT STATION UTILIZATION OF OCCUPIED**  
**CLASSROOMS AND CLASS LABORATORIES**

INSTITUTION	FTE	CLASSROOMS					LABORATORIES				
		2016	2015	2014	2013	2012	2016	2015	2014	2013	2012
<b>PUBLIC FOUR YEAR INSTITUTIONS</b>											
Grambling State University	4,236	53.7	47.2	46.3	54.5	52.0	49.3	33.9	47.9	46.0	53.6
Louisiana Tech University	10,400	60.1	57.2	55.9	53.5	51.6	72.4	71.8	66.7	60.4	63.1
McNeese State University	6,540	26.2	25.6	26.1	25.7	24.7	82.4	48.1	74.2	49.4	47.7
Nicholls State University	5,343	40.0	38.5	39.9	42.2	47.9	52.8	49.6	48.8	43.9	49.6
University of Louisiana in Monroe	7,480	56.9	53.7	49.7	47.7	46.4	84.9	72.4	68.8	62.9	54.8
Northwestern State University	7,516	56.1	54.4	55.8	55.9	50.7	35.5	35.9	34.9	34.7	37.4
Southeastern Louisiana University	10,900	59.9	59.7	61.4	68.6	72.7	53.8	51.6	49.5	48.9	45.2
University of Louisiana in Lafayette	14,949	55.4	56.8	54.2	52.5	51.8	59.7	56.7	60.2	64.3	66.1
LSU at Alexandria	2,251	42.1	27.2	30.4	25.1	22.1	43.8	41.1	41.7	32.4	44.4
LSU A&M (Including Ag. & Law)	29,103	27.5	40.1	36.6	36.6	42.2	42.8	58.6	58.2	56.9	58.1
LSU in Shreveport	2,993	39.2	46.2	45.3	45.8	47.2	50.0	63.4	50.2	58.5	55.2
University of New Orleans	6,212	39.8	42.2	42.2	42.1	46.0	51.1	43.8	43.8	42.5	64.9
Southern University A&M	6,160	48.6	49.2	53.8	55.3	55.0	35.1	37.2	47.0	48.5	45.4
Southern University at New Orleans	1,931	64.1	75.6	67.3	60.0	61.8	63.2	71.8	65.2	78.4	88.0
Southern University Law Center	621	37.4						0			
<b>PUBLIC TWO YEAR INSTITUTIONS</b>											
LSU at Eunice	1,854	44.1	29.3	41.8	29.9	41.3	63.6	53.7	64.4	43.0	46.6
Southern University at Shreveport	2,141	42.6	48.4	49.0	47.2	49.4	62.2	57.5	62.6	60.9	85.3
Baton Rouge Community College	5,628	63.8	78.4	67.3	71.8	68.6	37.1	80.3	62.7	62.3	66.4
Bossier Parish Community College	4,403	55.5	57.1	66.4	58.5	66.0	59.7	60.0	67.8	54.1	65.1
Delgado Community College	9,321	43.8	47.1	47.1	50.6	58.6	71.5	77.5	77.5	85.4	47.9
Nunez Community College	1,407	41.6	44.4	52.4	57.1	56.9	18.0	0.0	0.0	0.0	88.3
River Parishes Community College	1,159	57.3	67.8	24.0	57.2	62.3	44.0	61.5	82.1	68.0	31.0
South Louisiana Community College	2,807	78.3	83.8	77.7	76.6	75.2	82.0	85.2	84.9	68.7	66.0
Acadian	56	0.0	49.1	0.0	0.0	29.9	53.8	59.2	27.9	29.8	25.4
Charles B. Coreil	73	24.2	65.4	21.8	21.8	26.4	0.0	55.1	20.2	20.2	13.4
Evangeline	71	41.2	0.0	0.0	0.0	0.0	0.0	79.1	54.3	47.4	0.0
Gulf Area	96	33.9	55.9	42.1	43.5	62.4	59.5	100.2	60.7	36.1	25.8
Lafayette	1,065	0.0	75.5	49.9	72.1	69.5	218.1	81.4	39.6	41.4	35.7
T. H. Harris	225	76.5	71.1	35.2	32.8	8.9	60.2	80.0	43.7	43.0	24.4
Teche Area	27	0.0	0.0	0.0	0.0	0.0	44.9	44.1	22.4	18.7	0.0
Louisiana Delta Community College	1,334	71.5	64.1	72.0	70.4	70.5	27.0	49.4	42.7	39.8	51.2
Bastrop	122	87.8	56.8	45.8	46.2	58.7	29.9	10.8	10.2	11.4	19.7

Delta Ouachita	452	91.3	71.0	0.0	75.9	45.9	18.8	11.6	0.0	19.4	13.6
North Central	0	0.0	0.0	0.0	0.0	82.7	0.0	0.0	0.0	0.0	43.3
Northeast	118	64.7	48.2	40.8	6.6	18.7	15.1	7.3	7.9	25.9	44.6
Ruston	143	53.6	112.5	0.0	109.7	62.9	43.9	38.7	0.0	28.6	13.9
Tallulah	138	76.0	54.3	44.4	26.6	28.3	16.9	14.3	13.6	11.1	11.4
L E. Fletcher Tech Community College	1,340	36.0	27.0	27.1	37.1	28.5	46.8	29.7	26.6	26.1	41.7
Sowela Technical Community College	2,255	49.7	46.8	56.8	57.2	50.2	56.2	54.0	47.6	69.0	54.2
Capital Area Technical College											
Baton Rouge	0	0.0	36.2	57.0	51.2	71.0	0.0	33.3	17.4	46.6	16.5
Folkes	0	0.0	20.3	0.0	46.8	25.3	0.0	31.9	53.7	14.0	31.1
Jumonville	0	0.0	10.4	28.3	28.3	22.7	0.0	17.9	10.6	10.6	28.6
Westside	0	0.0	35.9	113.2	2.2	32.9	0.0	56.1	0.0	0.0	0.0
South Central LA Technical College											
Lafourche	160	31.0	27.1	30.1	34.8	21.4	33.8	34.2	31.5	32.9	19.9
River Parishes	721	50.3	77.9	41.3	49.8	40.5	29.2	27.5	26.3	22.3	14.7
Young Memorial	198	37.8	38.7	22.6	31.0	36.6	8.9	5.4	19.3	29.8	38.1
Central LA Technical College											
Alexandria	456	49.0	29.3	40.9	43.4	51.0	23.9	25.0	23.1	28.1	20.1
Avoyelles	234	69.1	51.0	49.1	30.3	15.9	60.0	41.2	62.7	39.7	31.6
Huey P. Long	175	0.0	0.0	0.0	0.0	0.0	27.1	11.7	18.7	10.2	10.6
Lamar Salter	176	50.7	25.2	31.0	51.0	21.7	21.9	28.2	14.1	8.9	8.5
Oakdale	130	72.2	87.1	99.4	79.1	117.4	41.3	30.7	36.9	34.4	25.6
Shelby Jackson	126	43.4	40.4	30.7	34.1	53.9	0.0	0.0	0.0	0.0	0.0
Northwest LA Technical College											
Mansfield	127	53.4	35.8	32.2	49.3	36.9	28.9	15.4	11.9	17.1	5.4
Natchitoches	191	33.5	32.9	24.2	47.5	61.6	33.5	24.1	20.6	0.0	0.0
Northwest	387	58.7	45.6	44.6	43.8	61.1	21.5	30.4	29.8	33.1	13.0
Sabine Valley	97	47.6	25.5	36.5	34.6	49.0	21.3	0.0	0.0	0.0	0.0
Shreveport Bossier	426	27.1	30.2	31.2	43.3	41.0	30.0	14.9	21.0	31.6	32.9
Northshore Technical Community College											
Florida Parishes	0	0.0	39.2	43.8	39.4	42.4	0.0	0.0	0.0	57.4	22.7
Hammond	0	0.0	41.4	46.3	59.4	17.8	0.0	42.5	39.8	35.8	28.3
Sullivan	1,883	56.3	47.3	51.2	44.4	29.2	45.2	32.7	39.0	28.9	18.1

\*DOES NOT INCLUDE SATURDAY CLASSES

**PERCENT STUDENT STATION UTILIZATION OF OCCUPIED CLASSROOMS (TABLE 7) 2016**



### PERCENT STUDENT STATION UTILIZATION OF OCCUPIED CLASS LABS (TABLE 7) 2016

