

# PERCENT STUDENT STATION UTILIZATION OF OCCUPIED CLASSROOMS AND CLASS LABORATORIES

## TABLE 7

The statistics which reflect percent of student utilization are extremely valuable when planning new facilities. They provide a general guide for the need for various sizes of classrooms and laboratories. The comparison between how well the teaching facilities accommodate the size of the classes being conducted in them is helpful; however, the ratio does not indicate how efficiently the facilities are being used. It must be noted that data in Table 7 only include rooms which are in use (scheduled), and is, therefore, an indication of how the capacity of the room is matched to the number of students in the class.

The percent of student station utilization is derived from the ratio of the total student hours of instruction to the potential student hours of instruction. The total student hours of instruction is defined as the enrollment of the class multiplied by the hours the class meets per day which is then multiplied by the number of days per week the class meets. The potential student hours of instruction is defined as the number of hours that the course meets each week, rounded to the nearest half hour, multiplied by the number of days per week the class meets. This figure is then multiplied by the capacity of the room.

Norm: Classrooms - 60% Student Station Utilization  
Laboratories - 80% Student Station Utilization

$$\text{Percent Student Station Utilization} = \frac{\text{Total Student Hours of Instruction}}{\text{Potential Student Hours of Instruction}}$$

As we continue with the sample data:

ENROLL- MENT	ROOM TYPE			CAPACITY		
33	110	3 days * 1 hour	* 33 = 99	50	3 days * 1 hour	* 50 = 150
40	110	2 days * 1.5 hr	* 40 = 120	50	2 days * 1.5 hr	* 50 = 150
46	110	3 days * 1 hour	* 46 = 138	50	3 days * 1 hour	* 50 = 150
26	110	2 days * 1.5 hr	* 26 = 78	50	2 days * 1.5 hr	* 50 = 150
52	110	3 days * 1 hour	* 52 = 156	50	3 days * 1 hour	* 50 = 150
45	110	3 days * 1 hour	* 45 = 135	50	3 days * 1 hour	* 50 = 150
54	110	2 days * 1.5 hr	* 54 = 162	50	2 days * 1.5 hr	* 50 = 150
26	110	3 days * 1 hour	* 26 = 78	50	3 days * 1 hour	* 50 = 150

30	110	3 days * 1 hour * 30 = 90	50	3 days * 1 hour * 50 = 150
39	110	2 days * 1.5 hr * 39 = 117	50	2 days * 1.5 hr * 50 = 150
			-----	-----
		TOTALS	1,173	1,500
17	210	1 day * 3 hrs * 17 = 51	24	1 day * 3 hrs * 24 = 72
14	210	1 day * 3 hrs * 14 = 42	24	1 day * 3 hrs * 24 = 72
25	210	3 days * 1 hour * 25 = 75	40	1 day * 3 hrs * 40 = 120
35	210	3 days * 1 hour * 35 = 105	40	1 day * 3 hrs * 40 = 120
30	210	2 days * 1.5 hr * 30 = 90	40	1 day * 3 hrs * 40 = 120
29	210	1 day * 3 hrs * 29 = 87	40	1 day * 3 hrs * 40 = 120
21	210	1 day * 3 hrs * 21 = 63	40	1 day * 3 hrs * 40 = 120
22	210	1 day * 3 hrs * 22 = 66	40	1 day * 3 hrs * 40 = 120
13	210	1 day * 3 hrs * 13 = 39	24	1 day * 3 hrs * 24 = 72
16	210	1 days * 3 hrs * 16 = 48	24	1 day * 3 hrs * 24 = 72
			-----	-----
		TOTALS	666	1,008

Total Student Hours in Classrooms = 1173

----- = .782 or 78%

Capacity in Classrooms = 1500

Total Student Hours in Class Laboratories = 666

----- = .660 or 66%

Capacity in Class Laboratories = 1008

The report for one institution would look like this:

	FTE	CLASSROOMS	LABORATORIES
Institution	5,411	78.2	66.0

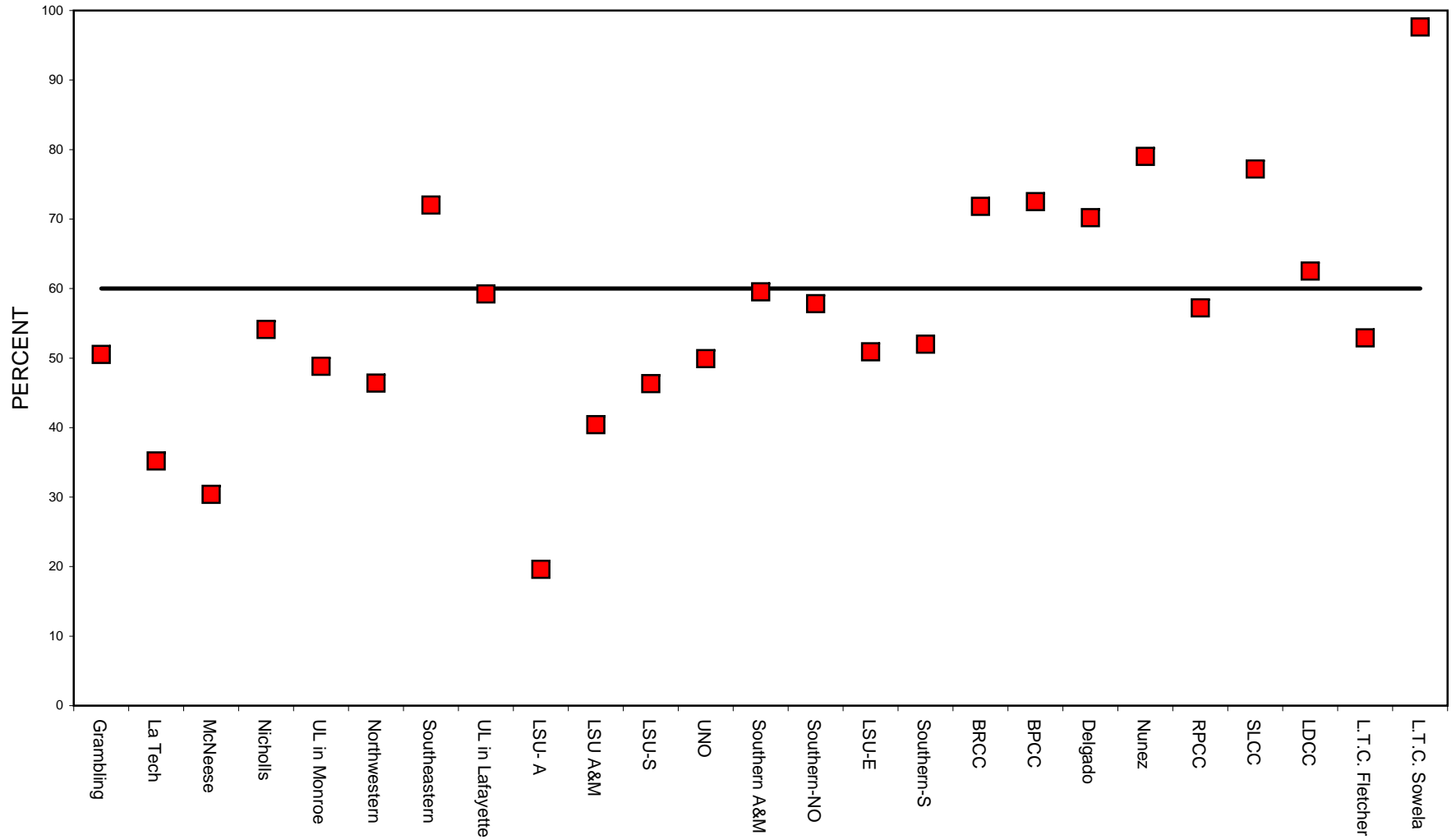
**TABLE 7**  
**PERCENT STUDENT STATION UTILIZATION OF OCCUPIED**  
**CLASSROOMS AND CLASS LABORATORIES**

INSTITUTION	FTE	CLASSROOMS					LABORATORIES				
		2010	2009	2008	2007	2006	2010	2009	2008	2007	2006
<b>PUBLIC FOUR YEAR INSTITUTIONS</b>											
Grambling State University	4,419	50.5	48.8	52.9	50.6	45.7	73.6	74.9	77.0	72.2	52.0
Louisiana Tech University	9,395	35.2	35.9	35.6	34.4	50.1	53.5	52.0	52.6	51.9	38.1
McNeese State University	7,607	30.4	31.7	30.7	38.5	40.1	45.6	40.4	38.6	42.8	42.9
Nicholls State University	5,964	54.1	53.7	50.4	48.9	50.5	45.4	47.1	45.2	48.7	47.3
University of Louisiana in Monroe	6,994	48.8	43.7	49.3	52.9	52.2	49.8	46.3	57.4	72.6	46.3
Northwestern State University	6,994	46.4	46.7	43.6	46.7	47.5	32.5	34.2	44.8	50.8	48.4
Southeastern Louisiana University	12,591	72.0	67.3	63.6	64.5	66.8	57.3	45.6	45.9	50.1	53.3
University of Louisiana in Lafayette	14,462	59.2	57.8	56.7	59.8	58.1	66.7	66.6	62.9	65.6	66.4
LSU at Alexandria	1,787	19.6	38.2	38.2	38.0	35.2	52.9	40.5	40.5	44.8	48.4
LSU A&M (Including Ag. & Law)	27,560	40.4	44.5	48.8	45.8	39.1	58.1	55.5	56.6	52.8	61.4
LSU in Shreveport	3,012	46.3	44.0	44.0	44.9	41.3	65.3	65.7	65.7	62.7	62.5
University of New Orleans	8,659	49.9	50.4	46.2	43.9	43.5	58.5	63.4	67.7	65.6	70.0
Southern University A&M	7,261	59.5	57.3	50.7	53.5	57.3	48.8	66.9	72.6	72.4	60.4
Southern University at New Orleans	2,606	57.8	**	**	**	**	94.5	**	**	**	**
<b>PUBLIC TWO YEAR INSTITUTIONS</b>											
LSU at Eunice	2,115	50.9	46.8	46.8	47.1	46.7	49.7	52.3	51.3	48.1	43.8
Southern University at Shreveport	2,018	52.0	66.3	47.1	44.4	52.0	73.4	131.1	89.0	66.6	67.0
Baton Rouge Community College	5,574	71.8	73.0	71.6	66.9	70.4	69.8	71.2	72.3	69.8	67.7
Bossier Parish Community College	4,583	72.5	66.0	58.2	62.4	**	67.2	56.4	43.0	53.8	**
Delgado Community College	12,219	70.2	73.0	66.9	65.5	63.9	54.9	53.9	53.8	53.4	49.8
Nunez Community College	1,291	79.0	63.6	7.8	15.7	48.4	0.0	76.8	8.6	22.8	42.2
River Parishes Community College	1,430	57.2	66.7	72.3	66.1	**	21.3	71.8	103.2	81.9	**
South Louisiana Community College	2,583	77.2	77.4	75.9	81.2	78.0	88.1	73.7	86.2	84.6	68.9
Louisiana Delta Community College	1,695	62.5	82.1	**	**	**	17.8	0.0	**	**	**
L.T.C. - Fletcher	1,449	52.9	58.0	54.3	58.0	49.3	26.7	21.0	23.6	21.5	15.2
L.T.C. - Sowela	1,890	97.6	69.9	60.1	51.5	57.1	71.0	60.1	21.8	55.4	20.3
<b>LTC Campuses</b>											
LTC - Acadian	272	30.0	34.5	30.0	30.0	0.0	26.2	23.2	27.8	22.1	15.9
LTC - Alexandria	422	83.8	49.8	51.7	67.6	0.0	21.0	25.1	31.3	31.5	0.0

LTC - Avoyelles	548	46.1	39.7	8.7	10.1	0.9	37.6	91.7	33.4	26.9	15.4
LTC - Bastrop	208	20.2	32.3	49.0	20.8	35.7	30.0	29.8	11.9	26.8	10.8
LTC - Baton Rouge	1,247	87.6	102.2	57.0	57.6	60.0	36.9	28.4	25.9	52.2	44.3
LTC - Charles B. Coreil	214	29.2	37.3	53.9	32.5	25.0	18.1	16.9	0.0	16.3	0.0
LTC - Delta Ouachita	565	37.6	66.3	43.0	64.7	3.7	20.1	16.8	13.2	20.6	18.8
LTC - Evangeline	268	0.0	0.0	0.0	0.0	0.0	39.7	56.5	36.6	32.5	0.0
LTC - Florida Parishes	474	101.6	60.6	52.9	46.0	36.4	21.7	27.2	31.9	16.4	17.5
LTC - Folkes	681	64.2	34.6	26.5	30.1	32.2	42.9	90.6	0.0	0.0	0.0
LTC - Gulf Area	488	72.1	75.0	40.7	47.4	8.9	32.6	39.8	27.4	28.6	64.8
LTC - Hammond	444	73.4	50.4	34.9	38.6	19.1	91.2	62.0	33.0	35.6	33.8
LTC - Huey P. Long	239	15.5	21.6	22.1	27.5	0.0	36.6	34.3	29.3	31.6	0.0
LTC - Jumonville	157	27.6	14.7	16.6	30.7	25.1	32.1	0.0	9.3	8.8	8.7
LTC - Lafayette	966	69.6	63.9	25.0	29.8	94.8	34.2	25.0	23.2	21.6	4.4
LTC - Lafourche	313	39.8	54.6	43.7	32.7	51.4	24.8	28.1	26.9	35.5	30.0
LTC - Lamar Salter	271	19.3	0.0	12.7	13.3	28.6	21.4	16.0	12.6	10.9	5.7
LTC - Mansfield	164	36.1	34.7	39.2	26.4	102.0	8.1	10.4	7.1	5.6	5.3
LTC - Morgan Smith	203	32.6	30.7	22.0	48.0	156.1	18.8	21.7	19.8	24.8	11.8
LTC - Natchitoches	211	34.2	62.7	39.6	51.6	50.0	0.0	200.0	0.0	0.0	0.0
LTC - North Central	78	115.2	115.2	4.6	68.5	70.9	31.1	31.1	11.7	26.8	14.8
LTC - Northeast	163	26.5	58.7	44.4	51.0	122.3	32.7	41.1	19.1	23.2	73.3
LTC - Northwest	565	59.5	66.3	33.3	25.2	11.1	21.9	25.3	31.1	25.7	64.5
LTC - Oakdale	357	69.5	86.4	32.8	64.7	11.5	37.6	28.3	33.8	35.8	15.3
LTC - River Parishes	805	36.4	40.2	64.3	0.0	67.0	26.8	18.5	22.0	0.0	23.2
LTC - Ruston	163	14.5	14.5	15.3	9.5	13.3	59.8	59.8	27.2	30.0	41.1
LTC - Westside	74	36.4	36.8	34.5	19.8	5.5	0.0	0.0	0.0	0.0	0.0
LTC - Young Memorial	343	37.8	51.9	22.4	43.7	0.0	16.1	22.0	20.5	24.6	6.7
LTC - Sabine Valley	152	70.0	10.4	32.8	30.2	27.9	0.0	0.0	0.0	51.7	96.6
LTC - Shelby Jackson	191	39.9	33.5	32.3	37.1	12.3	6.0	8.3	8.5	8.2	0.0
LTC - Shreveport Bossier	806	35.6	40.5	23.6	24.1	32.3	11.6	16.3	23.3	23.3	30.4
LTC - Sullivan	932	39.4	54.4	31.3	22.0	31.8	41.3	38.6	35.6	39.3	22.2
LTC - T. H. Harris	498	15.7	18.2	21.1	22.3	15.2	32.3	25.4	21.0	20.3	12.9
LTC - Teche Area	399	16.1	11.1	17.4	27.2	0.0	24.2	26.1	20.3	17.4	23.2

\*DOES NOT INCLUDE SATURDAY CLASSES

# PERCENT STUDENT STATION UTILIZATION OF OCCUPIED CLASSROOMS (TABLE 7) 2010



## PERCENT STUDENT STATION UTILIZATION OF OCCUPIED CLASS LABS (TABLE 7) 2010

