

PERCENT STUDENT STATION UTILIZATION OF OCCUPIED CLASSROOMS AND CLASS LABORATORIES

TABLE 7

The statistics which reflect percent of student utilization are extremely valuable when planning new facilities. They provide a general guide for the need for various sizes of classrooms and laboratories. The comparison between how well the teaching facilities accommodate the size of the classes being conducted in them is helpful; however, the ratio does not indicate how efficiently the facilities are being used. It must be noted that data in Table 7 only include rooms which are in use (scheduled), and is, therefore, an indication of how the capacity of the room is matched to the number of students in the class.

The percent of student station utilization is derived from the ratio of the total student hours of instruction to the potential student hours of instruction. The total student hours of instruction is defined as the enrollment of the class multiplied by the hours the class meets per day which is then multiplied by the number of days per week the class meets. The potential student hours of instruction is defined as the number of hours that the course meets each week, rounded to the nearest half hour, multiplied by the number of days per week the class meets. This figure is then multiplied by the capacity of the room.

Norm: Classrooms - 60% Student Station Utilization
Laboratories - 80% Student Station Utilization

$$\text{Percent Student Station Utilization} = \frac{\text{Total Student Hours of Instruction}}{\text{Potential Student Hours of Instruction}}$$

As we continue with the sample data:

ENROLL- MENT	ROOM TYPE	CAPACITY				
33	110	3 days * 1 hour * 33 =	99	50	3 days * 1 hour * 50 =	150
40	110	2 days * 1.5 hr * 40 =	120	50	2 days * 1.5 hr * 50 =	150
46	110	3 days * 1 hour * 46 =	138	50	3 days * 1 hour * 50 =	150
26	110	2 days * 1.5 hr * 26 =	78	50	2 days * 1.5 hr * 50 =	150
52	110	3 days * 1 hour * 52 =	156	50	3 days * 1 hour * 50 =	150
45	110	3 days * 1 hour * 45 =	135	50	3 days * 1 hour * 50 =	150
54	110	2 days * 1.5 hr * 54 =	162	50	2 days * 1.5 hr * 50 =	150
26	110	3 days * 1 hour * 26 =	78	50	3 days * 1 hour * 50 =	150

30	110	3 days * 1 hour * 30 = 90	50	3 days * 1 hour * 50 = 150
39	110	2 days * 1.5 hr * 39 = 117	50	2 days * 1.5 hr * 50 = 150
			-----	-----
		TOTALS	1,173	1,500
17	210	1 day * 3 hrs * 17 = 51	24	1 day * 3 hrs * 24 = 72
14	210	1 day * 3 hrs * 14 = 42	24	1 day * 3 hrs * 24 = 72
25	210	3 days * 1 hour * 25 = 75	40	1 day * 3 hrs * 40 = 120
35	210	3 days * 1 hour * 35 = 105	40	1 day * 3 hrs * 40 = 120
30	210	2 days * 1.5 hr * 30 = 90	40	1 day * 3 hrs * 40 = 120
29	210	1 day * 3 hrs * 29 = 87	40	1 day * 3 hrs * 40 = 120
21	210	1 day * 3 hrs * 21 = 63	40	1 day * 3 hrs * 40 = 120
22	210	1 day * 3 hrs * 22 = 66	40	1 day * 3 hrs * 40 = 120
13	210	1 day * 3 hrs * 13 = 39	24	1 day * 3 hrs * 24 = 72
16	210	1 days * 3 hrs * 16 = 48	24	1 day * 3 hrs * 24 = 72
			-----	-----
		TOTALS	666	1,008

Total Student Hours in Classrooms = 1173

Capacity in Classrooms = 1500
----- = .782 or 78%

Total Student Hours in Class Laboratories = 666

Capacity in Class Laboratories = 1008
----- = .660 or 66%

The report for one institution would look like this:

	FTE	CLASSROOMS	LABORATORIES
Institution	5,411	78.2	66.0

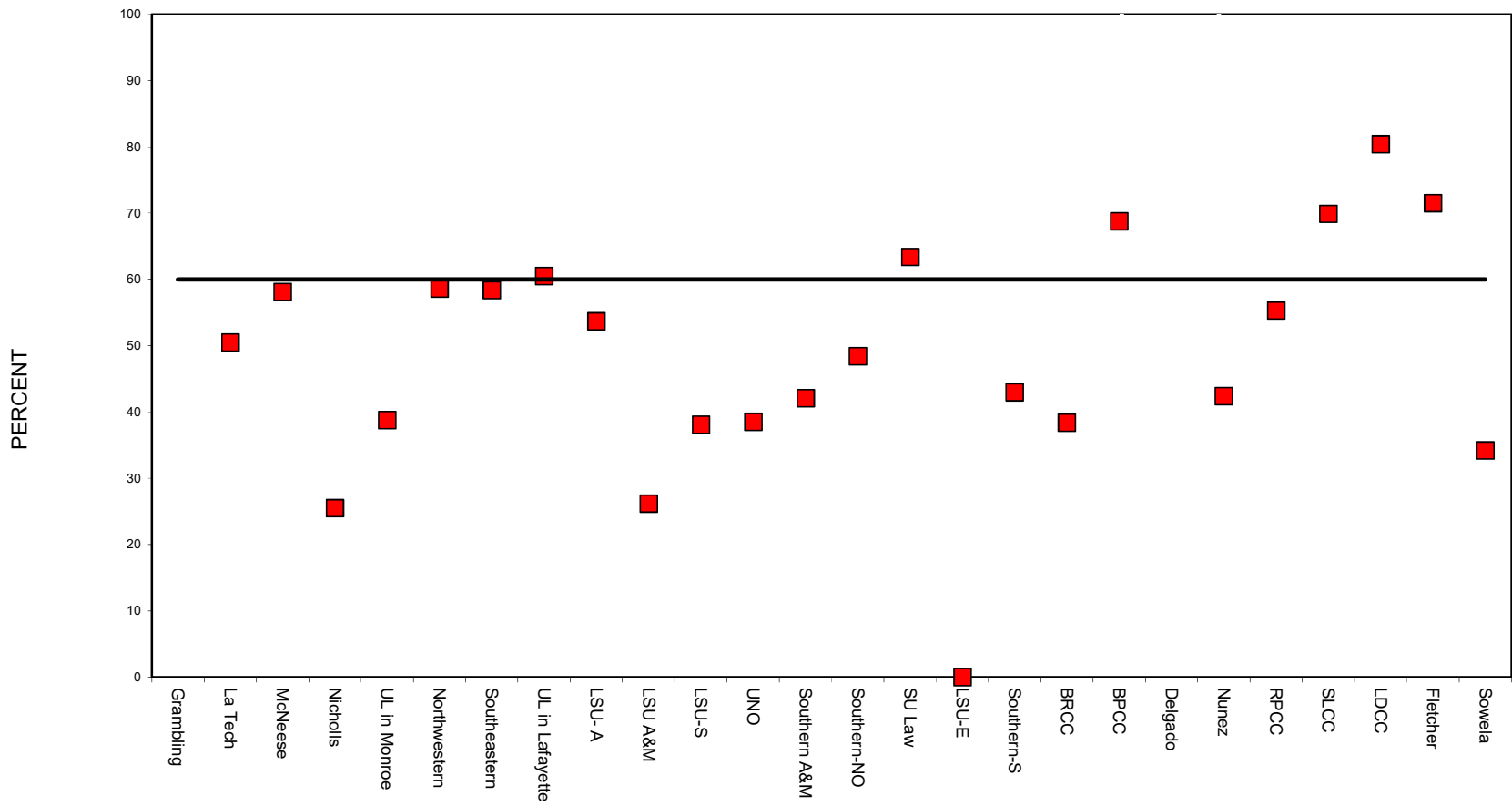
TABLE 7
PERCENT STUDENT STATION UTILIZATION OF OCCUPIED
CLASSROOMS AND CLASS LABORATORIES

INSTITUTION	FTE	CLASSROOMS					LABORATORIES				
		2017	2016	2015	2014	2013	2017	2016	2015	2014	2013
PUBLIC FOUR YEAR INSTITUTIONS											
Grambling State University	4,488	50.5	53.7	47.2	46.3	54.5	45.7	49.3	33.9	47.9	46.0
Louisiana Tech University	10,624	58.1	60.1	57.2	55.9	53.5	73.2	72.4	71.8	66.7	60.4
McNeese State University	6,634	25.5	26.2	25.6	26.1	25.7	79.5	82.4	48.1	74.2	49.4
Nicholls State University	5,405	38.8	40.0	38.5	39.9	42.2	54.8	52.8	49.6	48.8	43.9
University of Louisiana in Monroe	7,530	58.6	56.9	53.7	49.7	47.7	85.9	84.9	72.4	68.8	62.9
Northwestern State University	8,169	58.4	56.1	54.4	55.8	55.9	52.6	35.5	35.9	34.9	34.7
Southeastern Louisiana University	10,947	60.5	59.9	59.7	61.4	68.6	48.5	53.8	51.6	49.5	48.9
University of Louisiana in Lafayette	14,753	53.7	55.4	56.8	54.2	52.5	60.0	59.7	56.7	60.2	64.3
LSU at Alexandria	2,368	26.2	42.1	27.2	30.4	25.1	39.4	43.8	41.1	41.7	32.4
LSU A&M (Including Ag. & Law)	28,136	38.1	27.5	40.1	36.6	36.6	45.5	42.8	58.6	58.2	56.9
LSU in Shreveport	3,636	38.5	39.2	46.2	45.3	45.8	53.3	50.0	63.4	50.2	58.5
University of New Orleans	6,112	42.1	39.8	42.2	42.2	42.1	43.8	51.1	43.8	43.8	42.5
Southern University A&M	6,257	48.4	48.6	49.2	53.8	55.3	35.7	35.1	37.2	47.0	48.5
Southern University at New Orleans	2,024	63.4	64.1	75.6	67.3	60.0	68.0	63.2	71.8	65.2	78.4
Southern University Law Center	0	0	37.4				0	0			
PUBLIC TWO YEAR INSTITUTIONS											
LSU at Eunice	1,951	43.0	44.1	29.3	41.8	29.9	66.3	63.6	53.7	64.4	43.0
Southern University at Shreveport	2,064	38.4	42.6	48.4	49.0	47.2	53.4	62.2	57.5	62.6	60.9
Baton Rouge Community College	5,122	68.8	63.8	78.4	67.3	71.8	50.4	37.1	80.3	62.7	62.3
Bossier Parish Community College	4,464	665.3	55.5	57.1	66.4	58.5	671.4	59.7	60.0	67.8	54.1
Delgado Community College	8,608	42.4	43.8	47.1	47.1	50.6	69.1	71.5	77.5	77.5	85.4
Nunez Community College	1,589	55.3	41.6	44.4	52.4	57.1	80.9	18.0	0.0	0.0	0.0
River Parishes Community College	1,440	69.9	57.3	67.8	24.0	57.2	36.6	44.0	61.5	82.1	68.0
South Louisiana Community College	3,104	80.4	78.3	83.8	77.7	76.6	82.1	82.0	85.2	84.9	68.7
Acadian	78	64.6	0.0	49.1	0.0	0.0	65.1	53.8	59.2	27.9	29.8
Charles B. Coreil	69	37.6	24.2	65.4	21.8	21.8	90.0	0.0	55.1	20.2	20.2
Evangeline	74	35.2	41.2	0.0	0.0	0.0	0.0	0.0	79.1	54.3	47.4
Gulf Area	170	104.0	33.9	55.9	42.1	43.5	74.6	59.5	100.2	60.7	36.1
Lafayette	622	74.6	0.0	75.5	49.9	72.1	69.9	218.1	81.4	39.6	41.4
T. H. Harris	257	66.8	76.5	71.1	35.2	32.8	63.7	60.2	80.0	43.7	43.0
Teche Area	43	20.8	0.0	0.0	0.0	0.0	33.0	44.9	44.1	22.4	18.7

Louisiana Delta Community College	1,337	71.5	71.5	64.1	72.0	70.4	27.0	27.0	49.4	42.7	39.8
Bastrop	123	87.8	87.8	56.8	45.8	46.2	29.9	29.9	10.8	10.2	11.4
Delta Ouachita	441	91.3	91.3	71.0	0.0	75.9	18.8	18.8	11.6	0.0	19.4
North Central	0	0.0	0.0	0.0	0.0	0.0	0.0	0.0	0.0	0.0	0.0
Northeast	184	36.4	64.7	48.2	40.8	6.6	5.7	15.1	7.3	7.9	25.9
Ruston	173	53.6	53.6	112.5	0.0	109.7	43.9	43.9	38.7	0.0	28.6
Tallulah	158	76.0	76.0	54.3	44.4	26.6	16.9	16.9	14.3	13.6	11.1
L E. Fletcher Tech Community College	1,392	34.2	36.0	27.0	27.1	37.1	41.7	46.8	29.7	26.6	26.1
Sowela Technical Community College	2,161	46.4	49.7	46.8	56.8	57.2	59.7	56.2	54.0	47.6	69.0
Capital Area Technical College											
Baton Rouge	0	0.0	0.0	36.2	57.0	51.2	0.0	0.0	33.3	17.4	46.6
Folkes	0	0.0	0.0	20.3	0.0	46.8	0.0	0.0	31.9	53.7	14.0
Jumonville	0	0.0	0.0	10.4	28.3	28.3	0.0	0.0	17.9	10.6	10.6
Westside	0	0.0	0.0	35.9	113.2	2.2	0.0	0.0	56.1	0.0	0.0
South Central LA Technical College											
Lafourche	152	26.9	31.0	27.1	30.1	34.8	21.7	33.8	34.2	31.5	32.9
River Parishes	742	60.3	50.3	77.9	41.3	49.8	40.7	29.2	27.5	26.3	22.3
Young Memorial	169	28.5	37.8	38.7	22.6	31.0	11.7	8.9	5.4	19.3	29.8
Central LA Technical College											
Alexandria	412	19.6	49.0	29.3	40.9	43.4	25.0	23.9	25.0	23.1	28.1
Avoyelles	200	66.7	69.1	51.0	49.1	30.3	45.1	60.0	41.2	62.7	39.7
Huey P. Long	175	0.0	0.0	0.0	0.0	0.0	15.8	27.1	11.7	18.7	10.2
Lamar Salter	153	37.0	50.7	25.2	31.0	51.0	14.7	21.9	28.2	14.1	8.9
Oakdale	93	54.1	72.2	87.1	99.4	79.1	31.0	41.3	30.7	36.9	34.4
Shelby Jackson	125	45.4	43.4	40.4	30.7	34.1	0.0	0.0	0.0	0.0	0.0
Northwest LA Technical College											
Mansfield	89	52.9	53.4	35.8	32.2	49.3	22.0	28.9	15.4	11.9	17.1
Natchitoches	224	34.9	33.5	32.9	24.2	47.5	28.5	33.5	24.1	20.6	0.0
Northwest	316	48.8	58.7	45.6	44.6	43.8	30.0	21.5	30.4	29.8	33.1
Sabine Valley	88	54.7	47.6	25.5	36.5	34.6	0.0	21.3	0.0	0.0	0.0
Shreveport Bossier	305	26.5	27.1	30.2	31.2	43.3	8.2	30.0	14.9	21.0	31.6
Northshore Technical Community College											
Florida Parishes	0	0.0	0.0	39.2	43.8	39.4	0.0	0.0	0.0	0.0	57.4
Hammond	0	0.0	0.0	41.4	46.3	59.4	0.0	0.0	42.5	39.8	35.8
Sullivan	2,330	51.7	56.3	47.3	51.2	44.4	25.0	45.2	32.7	39.0	28.9

*DOES NOT INCLUDE SATURDAY CLASSES

PERCENT STUDENT STATION UTILIZATION OF OCCUPIED CLASSROOMS (TABLE 7) 2017



PERCENT STUDENT STATION UTILIZATION OF OCCUPIED CLASS LABS (TABLE 7) 2017

