

Postsecondary Inclusive Education Advisory Council

September 19, 2022



BOARD of REGENTS
STATE OF LOUISIANA



AGENDA ITEM II.

Roll Call and Approval of August 17, 2022 Minutes

State of Higher Education Inclusive Programs

Dr. Caroline Jurisich, University of Louisiana at Lafayette LIFE Program



BOARD of REGENTS
STATE OF LOUISIANA

UL LIFE **Learning is for Everyone**

University of Louisiana at Lafayette



Learn more about UL LIFE



History of UL LIFE

History & Beginnings

Family Interest

Regional Needs Assessment

- Perceived Interest
- Purpose and Outcome
- Curriculum
- Length
- Willingness to Pay for Costs/Sustainability
- Admission Requirements

Initial outside financial support

Program designed specially for our campus and region.

Designed for local students





History & Beginnings

- Became permanent program in 2017 and moved to the College of Education
- Became a Comprehensive Transition Program in June 2018
- Added residential component in 2019
- Expanded state and surrounding state exposure in 2018-2019



UL LIFE: By the Numbers

- 30 UL LIFE students
- 89% employment rate among graduates
- Five Employees
- 25% acceptance rate
- 67 mentors
- Growing.... Growing... Growing...



General Information & Program Specifics



Mission of the Program

The UL LIFE Program is a highly personalized program for young adults with intellectual disabilities. By combining academic, social, and career development skills at the college level, young adults with intellectual disabilities can become thriving members of our community.

Our LIFE courses, combined with college-level courses for the students to audit, all center around the practice of learning by doing. We work closely with each student to customize their courses and college experience so they are prepared for a career they love.



FOUR COMPONENTS OF UL LIFE

Academic Growth

LIFE students participate in functional academic classes within the LIFE program as well as audit general university courses in their area of interest. The entire program is driven by the importance of meaningful employment for the LIFE students. Their academic courses are chosen and taught to better prepare them as they enter the workforce. Students audit at least one university courses each semester.

Career Development

All LIFE students receive career instruction throughout their time in the program. Students begin their first semester by taking a career exploration course taught by LIFE staff. All LIFE students will begin their on-campus internship the fourth semester.

Community Involvement

Lafayette, Louisiana is a unique community that embraces different cultures. It is important that our students become involved in this diverse community and find their own special way to contribute. We require LIFE students to spend a certain amount of time each month outside of the classroom volunteering, taking classes, or participating in community or campus events.

Independent Living

With the expansion of the program, primarily the addition of on-campus housing component as well as the LIFE Skills Lab, LIFE students will now get hands-on experience and lessons in areas pertinent to living independently.



Eligibility Requirements

Students with an intellectual disability characterized by significant limitations in intellectual functioning and adaptive behavior, originating before age 18

Applicant must be between the ages of 18-25 upon admission to the program.

Applicant must have sufficient emotional and independent stability to participate in all aspects of UL LIFE.

Applicant should be able to sit through 60 minute courses with minimal breaks.

Applicant must be comfortable around large groups of people/self-regulate when presented with those situations.

Applicant must demonstrate the ability to accept responsibility for his/her actions and maintain respect for him/herself and others and have no history of disruptive or aggressive behaviors.



Eligibility Requirements

Applicant must be independent in handling his/her own medication, specialized dietary and/or medical needs.

Applicant must be self-motivated and adhere to the policies regarding attendance and participation in coursework within the program and audited UL Lafayette courses.

Applicant should be able to utilize basic phone technology with little to no supports.

Based on review of records and interviews, the applicant must have the potential to successfully achieve his/her goals within the context of the UL LIFE setting.



Qualifications for Advanced Program

1. Reading and comprehension abilities are at least on a second grade level
2. Ability to independently complete basic computation.
3. Can utilize technology (cell phone, laptop, etc.) on a more advanced level
 - Ability to check and understand emails from UL Professors
 - Ability to respond appropriately to emails



Qualifications, Continued

4. Has not reached Level 3 or beyond of Behavior Policy
5. Capable of navigating known areas of campus independently.
6. Ability to work independently for 10 minutes at a time on class assignments.
7. Ability to transition between lessons and class independently.



Time on Campus

Every semester a student enrolls in:

- Either a reading/writing OR mathematics course
- Life Skills Course (Career, Social, Advocacy)
- One or Two University audit course
- One Internship or Internship Prep Course
- **TOTAL OF 12-15 Hours**
- +Workout Course
- +Built in Social Time

Students spend at least 16-24 hours with LIFE Program a week- never less, often more (varies by semester). Fall 2021 students spent at least 24 hours on campus.



UL LIFE Academics & Internships



Schedule of Courses

FRESHMEN YEAR

Semester 1

LIFE 110. Functional Academic Writing
LIFE 120. Career Readiness
LIFE 230. Academic Support
UNIV 100 – Introduction to the University
Life on the Geaux Workout

Semester 2

LIFE 101. Personal Finance
LIFE 121. Independent Living
LIFE 230. Academic Support
University Audit Course (1 or 2)
Life on the Geaux Workout

SOPHOMORE YEAR

Semester 3

LIFE 210. Reading for a Purpose
LIFE 220. Successful Employment
LIFE 230. Academic Support
University Audit Course (1 or 2)
Life on the Geaux Workout

Semester 4

LIFE 201. Time and Schedule Management
LIFE 221. Communication Skills
LIFE 230. Internship
University Audit Course (1 or 2)
Life on the Geaux Workout



LIFE Courses - Years 3 & 4 (Advanced, Invitation Only Program)

- Students continue LIFE courses in mathematics, reading, and social skills.
- More emphasis is placed on independence, in both the classroom and internship placement.
- Students are expected to begin the process of independently navigating certain areas of campus.
- Students will continue to audit one university course and take LIFE on the Geaux workout class.
- See full list of courses in packet. Course descriptions can be found at catalog.Louisiana.edu and search LIFE.

Audit Course Selection

Advising

- Students attend individual advising sessions with LIFE staff
- Three to five courses are identified with the students that fit within their schedule and focus areas
- Promotes self-advocacy and independent decision-making

Course Selection

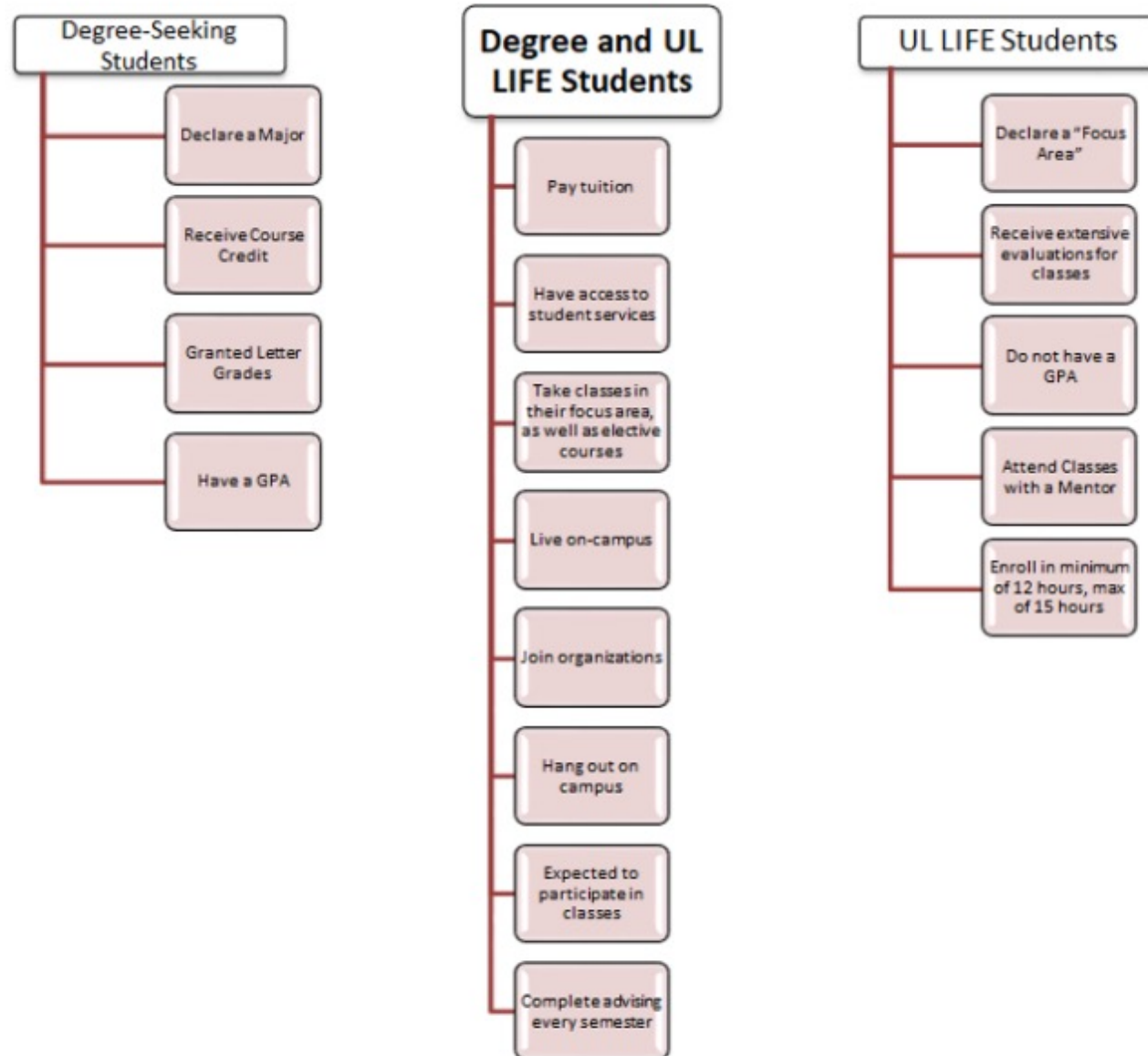
- Student's interest and background
- Faculty Recommendations
- Assigned Instructor
- Seek instructor approval prior to enrolling student





Inclusion & Campus Involvement

Differences and Similarities



University Life



Access Basic College Services

- Recreation Center
- Student Union
- Dining Services
- Library Services

Participate in campus events

- Athletics
- Assemblies
- Organizations/Clubs
- Graduation

Additional Inclusion

- Speech and Language graduate students provide support by facilitating age appropriate conversation groups
- LIFE on the Geaux Workout Classes
- UL Lafayette Preview Day
- Organizations
- Homecoming Nominations





MENTORS



- **Academic Mentors-** Attend University courses and assist in class, as well as outside of class on assignments, projects, and preparation. Collaborates with instructor on student needs. Promotes student independence.
- **Job Mentors-** Works with LIFE students in their place of internship. Promotes independence. Serves as liaison between place of internship and program.
- **Social Mentors-** Attend activities and events with students. Non-scheduled mentors.

University Housing

UL LIFE students are eligible to live in on-campus housing.

UL LIFE students will live in the Rose Garden dormitories during the Basic Program.

Out of town students will be required to live on campus.

Overnight orientation will take place in Summer 2022.



University Housing

2 bedroom/2 bath
Suite
(shared/double)
645 sq. ft.



- 1 microwave
- 1 mini-fridge
- Individual suite temperature control
- Private closets
- High-speed Internet with Wi-Fi access
- Utilities/cable included
- P.O. Box included
- Access to community rooms
- Handicap accessible units

Price per Semester (2020-2021*)

Suite Style Shared \$3,395.00

Suite Private \$4,807.00

Meal Plans (Required) \$1700-\$2,111



PROGAM COST

Students have a total of 12-15 hours on their official schedule.

There are no additional fees for mentors or UL LIFE program costs.

Keep in mind – students spend more than 12 hours with UL LIFE, have a one-to-one, sometimes two-to-one mentor, and specialized small-group instruction from LIFE staff (all with Special Education backgrounds).

Housing is also the same for our students, no extra costs associated.

Tuition is generated based on the number of hours registered, just as it is for other University students..

Example Cost Breakdown

12 Hour Student, Off-Campus: \$5,191

15 Hour Student, On-Campus: \$5,599

2019-2020 Annual Cost	With Parent (Commuter)	Campus Housing	Off Campus
Tuition/Fees (12 hours)²	\$10,334	\$10,334	\$10,334
Books & Supplies	\$ 1,300	\$ 1,300	\$ 1,300
Other Costs	\$ 5,130	\$ 4,230	\$ 5,130
Room & Board	<u>\$ 3,434</u>	<u>\$10,990</u>	<u>\$10,990</u>
Total	\$20,198	\$26,854	\$27,754



FINANCIAL ASSISTANCE

- UL LIFE is a Comprehensive Transition Program, meaning we are recognized by Department of Education and meet their standards and guidelines.
- This also allows our students to apply for Federal Pell grants. NOT eligible for student loans.
- Any Financial Aid questions can be directed to our Financial Aid director, who is very familiar with UL LIFE and our students.
- We will have a session for parents and students regarding Financial Aid once the admission process concludes.



Scholarship & Funding

Louisiana Vocational Rehab available for funding tuition, housing, books, and supplies.

- Students must be an LRS client.



UL LIFE CONTACTS

DR. CAROLINE JURISICH, DIRECTOR

MS. JADE VIATOR, ACADEMIC COORDINATOR

MS. CAROLINE BILLEAUDEAU, EMPLOYMENT COORDINATOR

UNIVERSITY OF LOUISIANA AT LAFAYETTE

LOUISIANA.EDU/LIFE

FACEBOOK: [UL LIFE PROGRAM](#)

INSTAGRAM: [@ULLIFEPROGRAM](#)

LIFEPROGRAM@LOUISIANA.EDU

THINKCOLLEGE.NET

Requirements of Comprehensive Transition and Postsecondary Programs and Accreditation

Dr. Gerlinde Beckers



The background features a series of concentric circles in light gray and dashed lines. A solid green speech bubble is centered on the page, containing the title text. The speech bubble has a small tail pointing downwards.

Comprehensive Transition and Postsecondary Programs : An Overview

What is a CTP Program?

A CTP Program may be a degree, certificate, nondegree or noncertificate program:

- Provided by a Title IV – participating institution
- Delivered to students physically attending the institution
- Designed to support students with intellectual disabilities seeking to continue academic, career and technical, and independent living instruction at an institution of higher education in order to prepare for gainful employment
- Includes an advising and curriculum structure
- Where students with intellectual disabilities have at least half of their participation in the program focus on academic components taken along with students without disabilities
- Providing students with intellectual disabilities opportunities to participate in coursework and activities with students without disabilities

The background of the slide features a series of thin, curved lines in shades of gray, creating a sense of motion and depth. These lines are more prominent on the left side and fade towards the right.

Academic Components with Students Without Disabilities

Include:

- Taking credit-bearing courses with students without disabilities
- Auditing or otherwise participating in courses with students without disabilities for which the student does not receive regular academic credit
- Participating in internships or work-based training in settings with individuals without disabilities

Who Qualifies for a CTP Program?

- Students with an intellectual disability:
 - Have cognitive impairment characterized by significant limitations in:
 - Intellectual and cognitive functioning, and
 - Adaptive behavior as expressed in conceptual, social, and practical adaptive skills, and
- Currently or formerly eligible for special education related services under the Individuals with Disabilities Education Act (IDEA), including a student who was determined eligible for special education or related services under the IDEA but was home-schooled or attended private school

Who Qualifies for a CTP Program Cont.

- Students must meet the general eligibility requirements under 34 CFR 668.32 except for paragraphs (A), (E), and (F)
 - Example of requirements that still apply: citizenship and residency requirements under 668.33
 - Example of requirements that differ: you may have a different standard for Satisfactory Academic Progress (SAP) for students in your CTP Program
 - Example of requirements that do not apply: student does not have to have high school diploma, GED, or passing score on an ability to benefit test

What Federal Financial Aid is Available for a CTP Program?

- **Non-loan need-based forms of federal student aid:**
 - Pell Grants
 - Federal Work Study (FWS)
 - Federal Supplemental Education Opportunity Grant (FSEOG)
- **Requirements for federal aid:**
 - Family must complete FAFSA
 - Students must have financial need ($\text{Cost of Attendance} - \text{EFC} = \text{Need}$)

The background of the slide features a series of thin, curved lines in shades of gray, creating a sense of motion and depth. These lines are more prominent on the left side and fade towards the right.

Program Eligibility

- General program requirements in 34 CFR 668.8
- CTP-specific requirements in 34 CFR 668.232:
 - Department approval
 - Meet the definition of a CTP Program
 - Have SAP policy for the CTP Program
 - Have identified outcomes for CTP students – this may be a credential such as certificate or degree, but could be defined objectives
 - Notify accrediting agency in writing about the CTP Program
 - Have established program length in weeks of instructional time and credit/clock hours

Helpful Links

- <https://studentaid.gov/understand-aid/eligibility/requirements/intellectual-disabilities>
- https://thinkcollege.net/sites/default/files/files/resources/diagram_CTP_app_process_F2.pdf
- <https://thinkcollege.net/sites/default/files/courses/ctp/index.html#/>
- <https://thinkcollege.net/resource/ctp-application-process/template-for-ctp-application>

The background features a series of concentric circles in light gray, some solid and some dashed, creating a ripple effect. A solid green speech bubble is centered on the page, pointing downwards.

Accreditation

Importance of PSE Program Accreditation

- **Benchmarks are useful for quality assurance and improvement.**
- **Valuable for institutions of higher education, college programs, accrediting agencies, students with ID and their parents.**
- **Implementation will validate and strengthen programs.** • **Accreditation is how all higher education programs are held accountable.**
- **In 2008 through the HEOA, Congress called for the establishment of the NCC Accreditation Workgroup**

The background of the slide features several thin, curved lines in a light gray color, some solid and some dashed, creating a sense of movement and flow. On the left side, there is a green speech bubble graphic containing the text 'Future Direction 2021-2025'.

Future Direction 2021-2025

- Pilot the accreditation process with recruited programs
- Refine and finalize the process based on feedback from pilots and others in the field of inclusive higher education
- Refine and finalize the Accreditation Determination Report format
- Provide recommendations to any newly developed accrediting organization

https://thinkcollege.net/sites/default/files/files/TCreport_accred_modelstandards_2021.pdf

Report on Model Accreditation Standards for Higher Education Programs for Students with Intellectual Disability: Progress on the Path to Education, Employment, and Community Living

REPORT TO: United States Secretary of Education United States Senate Committee on Health, Education, Labor and Pensions United States House of Representatives Committee on Education and Labor National Advisory Committee on Institutional Quality and Integrity The National Coordinating Center Accreditation Workgroup May 2021

MODEL STANDARDS, GUIDANCE, AND REVIEW REQUIREMENTS

AGENDA ITEM V.

Survey of Programs Discussion

AGENDA ITEM VI.

Funding and Application Discussion



AGENDA ITEM VII.

Public Comments

AGENDA ITEM VIII.

Adjournment