

Collis B. Temple, III
Chair

Gary N. Solomon, Jr.
Vice Chair

Robert W. Levy
Secretary

Kim Hunter Reed, Ph.D.
Commissioner of Higher Education



P. O. Box 3677
Baton Rouge, LA 70821-3677
Phone (225) 342-4253, FAX (225) 342-9318
www.laregents.edu

David J. Aubrey
Christian C. Creed
Blake R. David
Randy L. Ewing
Stephanie A. Finley
Phillip R. May, Jr.
Darren G. Mire
Wilbert D. Pryor
T. Jay Seale, III
Terrie P. Sterling
Felix R. Weill
Judy A. Williams-Brown
Catarena M. Lobré, Student

January 31, 2023

The Honorable John Bel Edwards
Governor, State of Louisiana

Dear Governor Edwards:

Act 400 of the 2018 Regular Legislative Session calls for action relative to a master plan for postsecondary education. The Board of Regents is charged to submit an annual report on the status of postsecondary education, including in such report all master plan revisions since the last report.

Attached please find a copy of the Master Plan Year Three Review, which was released at the September 21, 2022 Board of Regents meeting. Also linked for reference are copies of [the Master Plan Year Two Review](#), [the Master Plan Year One Review](#), and the full original Master Plan for Higher Education, [Louisiana Prospers: Driving Our Talent Imperative](#), adopted by the Regents in August 2019.

In August 2019, the Master Plan established as the educational attainment goal for Louisiana that 60% of Louisiana's working adults hold a degree or credential of value by the year 2030. Our previous attainment rate was 48.1%. Today Lumina has released our new attainment rate (2021), calculated since the pandemic, which is 47.8%. The attached Year Three Review records a slight increase in college completers: up by 312 students since last year. Given the number of disruptions in our state since 2020, these stable numbers are promising, but we recognize significant progress must be made in the years ahead.

To reach an education attainment level of 60%, Louisiana will need to more than double its number of annual completers produced year-over-year, from approximately 40,000 in 2018 to 85,000 by 2030. Informed by data, Regents staff has identified a clear three-part formula to expand the production of postsecondary credentials for Louisiana's families, communities, and employers:

1. Increase college going;
2. Improve college success; and
3. Recognize all credentials of value when calculating attainment rates.

To reach the goal, the number of students completing college using these combined approaches will need to increase by an additional 180,000 residents over the next eight years. The Year Three Review identifies the following strategies to be employed by higher education stakeholders, together with implementation steps to put these strategies into action.

Increase College Going (+80,000 Completers)

- Increase the number of students starting college in high school through dual enrollment, AP, and IB.
- Expand the number of students who graduate high school with a postsecondary credential or build a solid foundation towards earning a degree from their college/university of choice through Fast Forward (earning an associate's degree or apprenticeship in high school) and/or Louisiana Transfer Pathways.
- Grow the number of residents earning an industry-based certification through the M.J. Foster Promise program, which provides financial aid to adults.
- Accelerate the number of near-completers who finish their degrees through programs such as Compete LA.

Improve College Success (+45,000 Completers)

- Establish the Meauxmentum Approach to improve student success and close equity gaps:
 - Students make purposeful choices related to their college goal during first year.
 - Strong student advising, which sets a clear pathway to graduation, creates experiences that increase learners' belief in themselves, makes meaningful connections to their field of interest, and implements reformed math and English courses that support their programs of study.
 - Comprehensive student support is incorporated both inside and outside the classroom

Recognizing All Credentials of Value (+55,000 Completers)

- Count industry-based certifications, degrees, or diplomas awarded by Louisiana's independent, private and proprietary institutions and build the technology and data sharing agreements necessary to do so.

Despite the global COVID-19 pandemic and multiple weather-related emergencies in Louisiana since 2019, higher education stakeholders in Louisiana remain committed to accelerating student learning, increasing affordability and eliminating persistent achievement gaps. We believe through this we will realize a more prosperous tomorrow for Louisiana and its citizens, bringing the vision of talent development identified in the Master Plan to reality.

If you have questions, please do not hesitate to contact me concerning this response or any other matters relating to higher education.

Sincerely,

A handwritten signature in dark ink, appearing to read "Kim Hunter Reed". The signature is fluid and cursive, with the first name "Kim" being the most prominent.

Kim Hunter Reed, Ph.D.
Commissioner of Higher Education

Attachment

cc: The Honorable Patrick Page Cortez, Senate President
The Honorable Clay Schexnayder, Speaker of the House
Yolanda Dixon, Secretary of the Senate
Michelle Fontenot, Clerk of the House
Poynter Library (DRPLibrary@legis.la.gov)



PATHWAY to 2030

BOARD OF REGENTS MASTER PLAN SUMMARY

YEAR 3 REVIEW: 2022



In 2019, the Louisiana Board of Regents issued its Master Plan for Higher Education establishing an audacious goal for the state – 60% of working adults holding a degree or credential of value by the year 2030. At that time, Regents committed itself to “lead the way in developing and implementing key initiatives to eliminate performance gaps, bring equity and provide opportunity and social mobility to underserved Louisiana residents.” Following two years of major disruptions in our state, now is the time to accelerate all pathways to prosperity.

Reaching an educational attainment level of 60% requires Louisiana to more than double its number of annual completers, from approximately 40,000 in 2018 to 85,000 by 2030. But the Pathway to 2030 is not just about the destination of 85,000 completers, it’s also about the journey of establishing long-term, sustainable prosperity for Louisiana and its citizens. We cannot tinker around the edges in our approach. System redesign may be difficult, but it is necessary and it must take place at scale.

While challenging to accomplish, the good news is, the Pathway to 2030 is clear. Using rich data resources, Regents can now demonstrate our

formula for expanding the benefits of postsecondary education to the state’s citizens, families, communities, and employers. We know what it will take to steadily increase the annual number of Louisianians who complete a credential and how to positively impact the quality of work and life for an additional 180,000 citizens to reach our goal.

To navigate that pathway successfully requires coordinated strategies within every aspect of the education ecosystem. It necessitates widening pathways to enable more people to begin or resume their higher education dream, transforming the learning experience to facilitate more student success, and recognizing and rewarding all postsecondary attainment that has economic value.

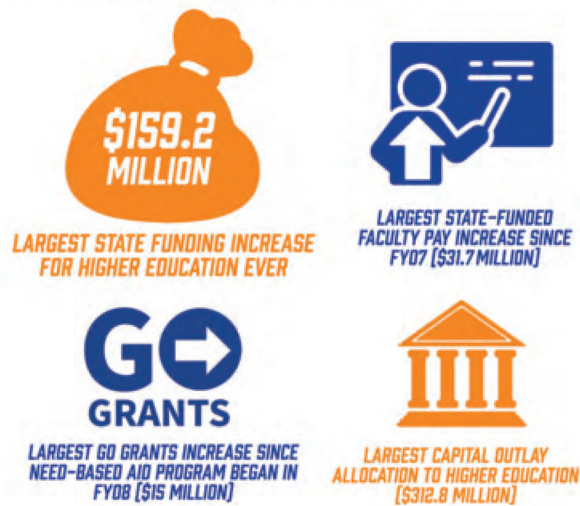
Having a shared vision that focuses on accelerating student learning, increasing affordability, and eliminating persistent equity gaps unifies our mission and purpose. Our state benefits from strong higher education leaders at the system level and both public and private institutions working collaboratively, standing shoulder-to-shoulder with our Governor, our legislature, our K-12 partners, and our stakeholders in embracing this work and moving it forward. Success will not only position Louisiana as a leader in innovation, opportunity and talent, but also secure a stronger, more prosperous tomorrow for our people.

Our future demands that we get this right.

MAJOR YEAR-THREE ACCOMPLISHMENTS



LARGEST-EVER NET INCREASE FOR HIGHER EDUCATION



I believe this is the best budget for higher education in at least a generation, if not our state's history."

Removing Major Barriers to Credential Completion

- Statewide Co-Requisite Math/English Policy
- Prior-Learning Assessment Guidelines
- Universal Transferability Legislation
- Student Success Council Established
- Title IX Audits and Training to Improve Student Safety

Increasing Affordability through New and Expanded Financial Aid Programs

- MJ Foster Promise for Adult Students
- Completer Fund

Promoting Dual Enrollment

- Ladualenrollment.com portal launch
- Legislation to assure counseling opportunities in secondary school
- Mobile labs for community colleges/high schools

Strengthening Education to Employment Alignment

- Praxis Core barrier removed for teacher candidates
- Nurse capitation investment expanded healthcare cohorts
- Reboot Louisiana re-skilled adults for high-demand jobs

Building Workforce Alignment

- Redesigned Academic Program Planning
- Regional STEM Centers
- Regional Cybersecurity Education Grants

Securing Federal Funding for University-Based STEM Research

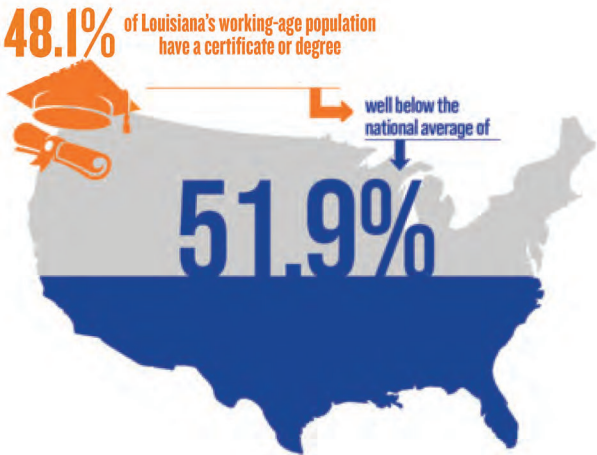
- Millions of dollars received from National Science Foundation (NSF), NASA and National Institutes for Health (NIH)

Increasing Funding Formula Outcomes to 28%

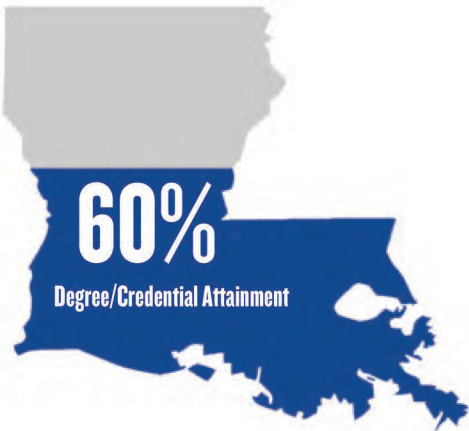
- Allocating 22% towards equity

LOUISIANA PROSPERS: THE PATHWAY TO 2030

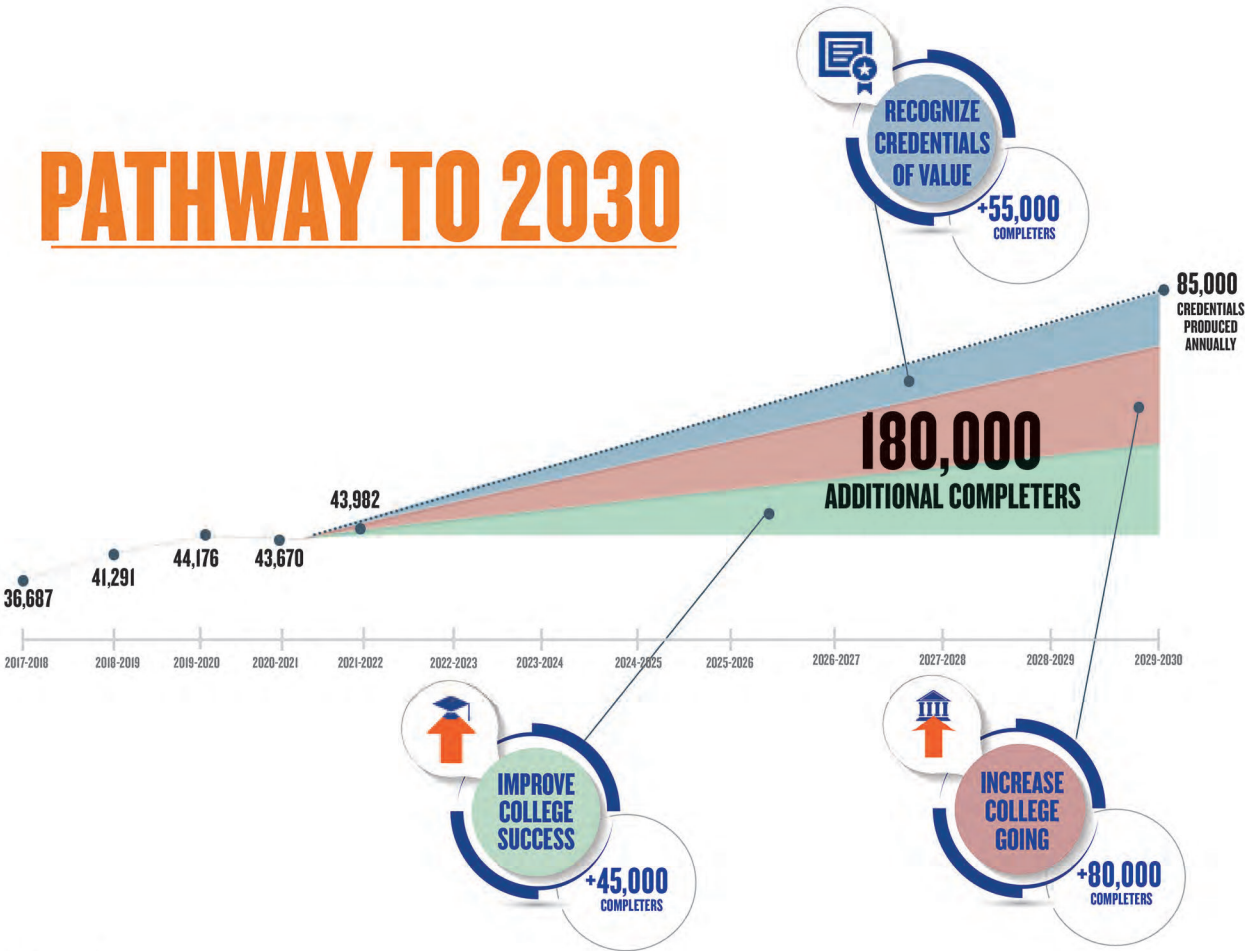
THE CHALLENGE



THE GOAL



PATHWAY TO 2030



STRATEGIES AND OPPORTUNITIES

INCREASE COLLEGE GOING

To reach Louisiana's attainment goal of 60% by 2030, we must create more ways for high school students to enter the Prosperity Pipeline by:

- Increasing access to early college experiences that build toward credentials of value,
- Expanding Fast Forward (dual enrollment) or Louisiana Transfer Pathways so that students earn a credential before they even graduate high-school or build a solid foundation towards completing that credential in their college or university of choice.
- Growing the number of Louisiana residents who earn industry-based certifications and credentials through the MJ Foster Promise program, which provides financial aid to adults.
- Supporting strategies that bring back near-completers and accelerate their degree completion, like Compete LA.



LOUISIANA
DUAL ENROLLMENT



Re-Engage Adults



STRATEGIES AND OPPORTUNITIES

IMPROVE COLLEGE SUCCESS

The **Meauxmentum Approach** is an evidence-based framework that has been demonstrated to significantly improve student success and close equity gaps. During the first year in college the Meauxmentum Approach helps each student make a purposeful choice about the direction of their college goals. Stemming from that choice, they are advised along a clear pathway to graduation, which includes English and Mathematics courses that support their program of study, opportunities to make a strong connection to that discipline, and experiences that heighten their belief in themselves as a learner. Continuing towards graduation, the Meauxmentum Approach incorporates support for each student in all of the milestones that they encounter along their educational journey, both inside and outside the classroom, and integrates experiences that create deeper and more engaged learning. By employing the Meauxmentum Approach, Louisiana institutions can improve student completion.



RECOGNIZE ALL CREDENTIALS OF VALUE

Louisiana's public colleges and universities currently graduate approximately 45,000 students each year with degrees, diplomas, and certifications. Many other students are working towards industry-based certifications, degrees, or diplomas from one of Louisiana's independent, private, proprietary, or out-of-state institutions. To truly measure progress towards our statewide goal of 60% by 2030, mechanisms must be created to recognize and count all credentials of value.

More than one million Louisianians have some credit towards a college degree, many with work experiences that warrant even more, while several thousand have already earned all of the credits required for a degree. We need to build the technology that recognizes when a student has crossed that educational threshold, even at several institutions, and provide those degree completers with the credential that they have earned.





NEXT STEPS

INCREASE COLLEGE GOING



Adopt early college admission pathway

Establish a universal dual enrollment funding structure

Expand teacher training, including Geaux Teach

Engage regional partners to meet high-demand workforce needs in priority sectors

Develop new degrees supporting lifelong learning

Create Universal Transfer Pathways

IMPROVE COLLEGE SUCCESS



Host Meauxmentum Summit

Implement Meauxmentum Year Strategies to Include in 1st Year:

- Math, English and 3 courses connected to degree program

Replace all Math/English Remedial Courses with Co-Req Model

Strengthen Counseling/Advising for Students

Adopt Campus-wide Academic Mindset strategies to include:

- Belonging & Inclusion
- Purpose & Value
- GRIT & Perseverance
- Growth Mindset

RECOGNIZE ALL CREDENTIALS OF VALUE



Use credential completion data from private, proprietary and Act 129 institutions to contribute to statewide credential counts

Count industry-based credentials eligible for MJ Foster Promise financial aid program

Implement reverse transfer degrees

Increase credit based on prior-learning guidelines



BOARD of REGENTS
STATE OF LOUISIANA

This public document is published at a total cost of \$133.36. Two hundred fifty (250) copies of this public document were published in this first printing at a cost of \$133.36. The total cost of all printings for this document including reprints is \$133.36. This document was published by OTS-Production Support Services, 627 North 4th Street, Baton Rouge, LA 70802, for the Louisiana Board of Regents to fulfill its constitutional authority to formulate and make timely revisions to a master plan for postsecondary education under authority of Article III, Section 5(D)4 of the Louisiana Constitution. This material was printed in accordance with the standards of printing by state agencies established in R.S. 43:31. Printing of this material was purchased in accordance to the provisions of Title 43 of the Louisiana Revised Statutes.

DEVELOPING TALENT SO LOUISIANA PROSPERS

laregents.edu