



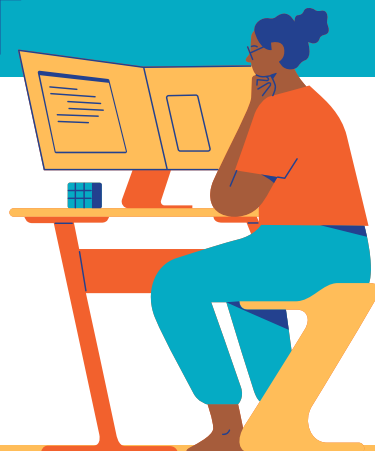
MANAGEMENT

GENERAL INFORMATION

Are you a natural leader with a passion for business? Consider pursuing a degree in management. In this field, you will learn the skills necessary to lead teams, plan and execute projects, and make strategic decisions. As a management professional, you can work in a variety of industries, including healthcare, finance, technology, and non-profit organizations.

Management roles range from project manager to human resource specialist, from business analyst to executive manager.

With a degree in management, you will be prepared to make a meaningful impact on any organization you choose to work with.



SKILLS YOU'LL DEVELOP

- Leadership skills
- Budgeting skills
- Strategic planning
- Effective communication

POTENTIAL CAREERS

- Operations Manager
- Human Resources Manager
- Project Manager
- Supply Chain Manager
- Budget Analyst

Transfer pathways start at a Louisiana community college.

- Complete the first 60 credits on your transfer pathway at a community college
- Earn your associate degree
- Apply to a public Louisiana university that offers a bachelor's degree in management
- Transfer in with a guarantee that all 60 credits will apply to your bachelor's degree



DID YOU KNOW?

You can earn credit for a course through accelerated programs, like:

- Dual Enrollment
- Advanced Placement
- International Baccalaureate
- Prior Learning Assessment
- College Level Examination Program



Talk to an advisor at your college today!



your FIRST 60 CREDITS IN MANAGEMENT

Subject	Required Courses	Common Courses, if applicable
Business	Intro to Business OR Business Law Business Statistics II Business Calculus Intro to Financial Accounting Intro to Managerial Accounting	CBUS 2103, CBUS 1003, CBUS 2323, CBUS 2313, CACC 2113, CACC 2213
English	Composition I and II	CENL 1013 CENL 1023
Fine Arts	One Fine Arts Elective*	
Humanities	Public Speaking Two Humanities Electives*	CCOM 2013
IT	Three credits of IT elective that covers at least 50% Excel*	
Math	Intro Statistics College Algebra	CMAT 1303, CMAT 1213
Natural Sciences	One Life Science, one Physical Science, and chose one more course in the same discipline from either*	
Social/Behavioral Science	Microeconomics Macroeconomics	CECN 2223, CECN 2213
Other	One Elective*	

*Each student may select their preferred courses in these subject areas.

START AT ANY OF THESE COLLEGES:



FINISH AT ANY OF THESE UNIVERSITIES:

- Baton Rouge Community College
- Bossier Parish Community College
- LSU at Eunice
- Northshore Technical Community College

- Grambling State University
- Louisiana State University
- LSU in Shreveport
- Louisiana Tech University
- McNeese State University
- Nicholls State University
- Northwestern State University
- Southeastern Louisiana University
- Southern University A&M
- University of Louisiana at Lafayette
- University of Louisiana at Monroe
- University of New Orleans