

PERCENT STUDENT STATION UTILIZATION OF OCCUPIED CLASSROOMS AND CLASS LABORATORIES

TABLE 7

The statistics which reflect percent of student utilization are extremely valuable when planning new facilities. They provide a general guide for the need for various sizes of classrooms and laboratories. The comparison between how well the teaching facilities accommodate the size of the classes being conducted in them is helpful; however, the ratio does not indicate how efficiently the facilities are being used. It must be noted that data in Table 7 only include rooms which are in use (scheduled), and is, therefore, an indication of how the capacity of the room is matched to the number of students in the class.

The percent of student station utilization is derived from the ratio of the total student hours of instruction to the potential student hours of instruction. The total student hours of instruction is defined as the enrollment of the class multiplied by the hours the class meets per day which is then multiplied by the number of days per week the class meets. The potential student hours of instruction is defined as the number of hours that the course meets each week, rounded to the nearest half hour, multiplied by the number of days per week the class meets. This figure is then multiplied by the capacity of the room.

Norm: Classrooms - 60% Student Station Utilization
Laboratories - 80% Student Station Utilization

$$\text{Percent Student Station Utilization} = \frac{\text{Total Student Hours of Instruction}}{\text{Potential Student Hours of Instruction}}$$

As we continue with the sample data:

ENROLL- MENT	ROOM TYPE	CAPACITY				
33	110	3 days * 1 hour * 33 =	99	50	3 days * 1 hour * 50 =	150
40	110	2 days * 1.5 hr * 40 =	120	50	2 days * 1.5 hr * 50 =	150
46	110	3 days * 1 hour * 46 =	138	50	3 days * 1 hour * 50 =	150
26	110	2 days * 1.5 hr * 26 =	78	50	2 days * 1.5 hr * 50 =	150
52	110	3 days * 1 hour * 52 =	156	50	3 days * 1 hour * 50 =	150
45	110	3 days * 1 hour * 45 =	135	50	3 days * 1 hour * 50 =	150
54	110	2 days * 1.5 hr * 54 =	162	50	2 days * 1.5 hr * 50 =	150
26	110	3 days * 1 hour * 26 =	78	50	3 days * 1 hour * 50 =	150

30	110	3 days * 1 hour * 30 = 90	50	3 days * 1 hour * 50 = 150
39	110	2 days * 1.5 hr * 39 = 117	50	2 days * 1.5 hr * 50 = 150
			-----	-----
		TOTALS	1,173	1,500
17	210	1 day * 3 hrs * 17 = 51	24	1 day * 3 hrs * 24 = 72
14	210	1 day * 3 hrs * 14 = 42	24	1 day * 3 hrs * 24 = 72
25	210	3 days * 1 hour * 25 = 75	40	1 day * 3 hrs * 40 = 120
35	210	3 days * 1 hour * 35 = 105	40	1 day * 3 hrs * 40 = 120
30	210	2 days * 1.5 hr * 30 = 90	40	1 day * 3 hrs * 40 = 120
29	210	1 day * 3 hrs * 29 = 87	40	1 day * 3 hrs * 40 = 120
21	210	1 day * 3 hrs * 21 = 63	40	1 day * 3 hrs * 40 = 120
22	210	1 day * 3 hrs * 22 = 66	40	1 day * 3 hrs * 40 = 120
13	210	1 day * 3 hrs * 13 = 39	24	1 day * 3 hrs * 24 = 72
16	210	1 days * 3 hrs * 16 = 48	24	1 day * 3 hrs * 24 = 72
			-----	-----
		TOTALS	666	1,008

Total Student Hours in Classrooms = 1173

Capacity in Classrooms = 1500
----- = .782 or 78%

Total Student Hours in Class Laboratories = 666

Capacity in Class Laboratories = 1008
----- = .660 or 66%

The report for one institution would look like this:

	FTE	CLASSROOMS	LABORATORIES
Institution	5,411	78.2	66.0

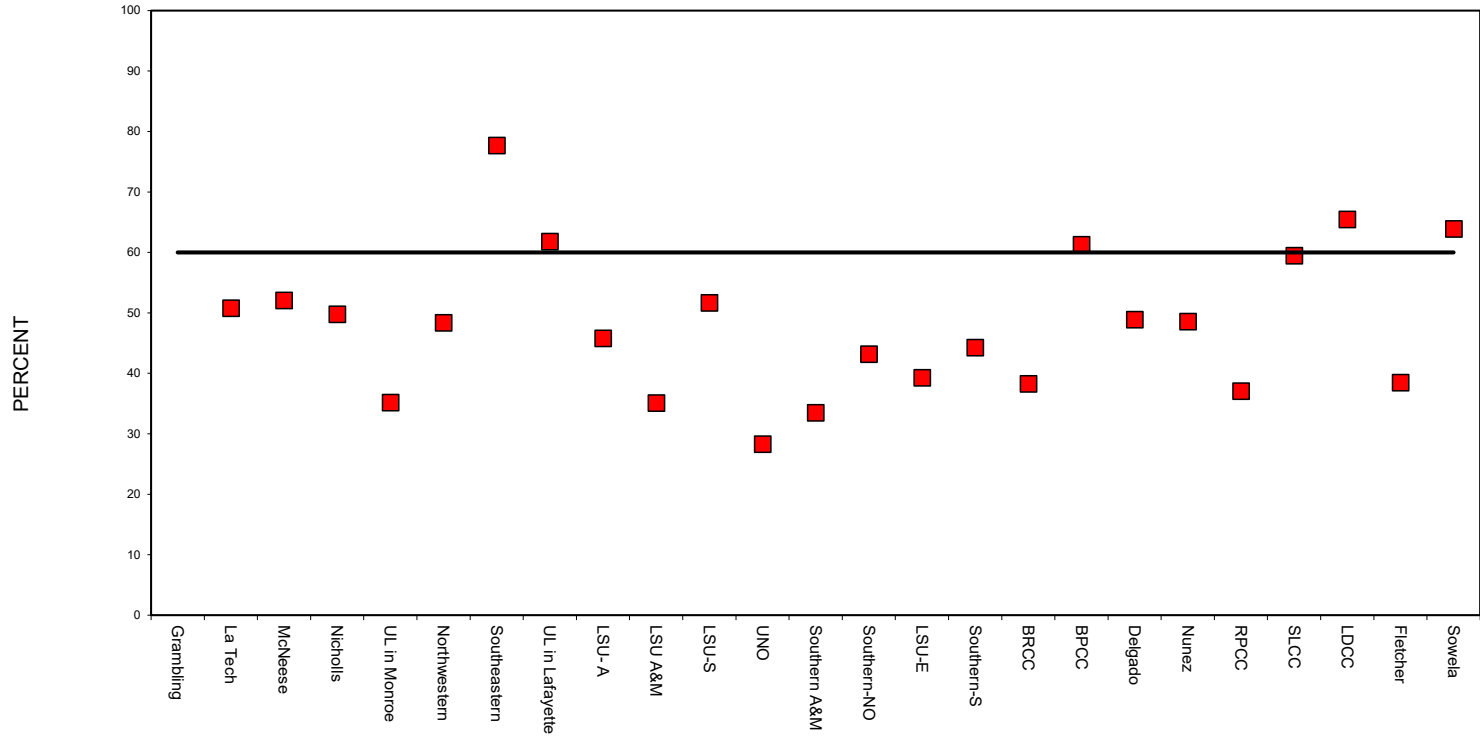
TABLE 7
PERCENT STUDENT STATION UTILIZATION OF OCCUPIED
CLASSROOMS AND CLASS LABORATORIES

INSTITUTION	FTE	CLASSROOMS					LABORATORIES				
		2024	2023	2022	2021	2019	2024	2023	2022	2021	2019
PUBLIC FOUR YEAR INSTITUTIONS											
Grambling State University	4485	50.8	50.7	51.7	43.7	47.7	29.2	33.6	35.5	30.9	46.9
Louisiana Tech University	10141	52.1	52.1	47.9	48.2	54.8	60.3	63.4	59.9	58.8	74.2
McNeese State University	5462	49.8	48.5	48.1	45.4	31.0	79.5	78.4	78.1	80.1	57.3
Nicholls State University	5032	35.2	35.6	32.4	34.6	38.3	59.3	61.4	60.2	64.6	63.5
University of Louisiana in Monroe	6785	48.4	45.6	47.4	48.1	53.2	55.8	66.4	59.4	71.7	78.9
Northwestern State University	6182	77.7	77.7	77.1	72.2	54.2	107.0	107.0	110.5	107.5	57.3
Southeastern Louisiana University	10421	61.8	59.4	57.0	55.6	65.5	53.9	53.2	50.7	51.1	41.1
University of Louisiana in Lafayette	13641	45.8	47.3	42.8	40.1	53.5	53.5	55.2	52.6	52.1	60.4
LSU at Alexandria	4632	35.1	39.1	37.3	30.9	42.1	40.2	42.1	43.6	36.9	43.8
LSU A&M (Including Ag. & Law)	37650	51.7	46.5	43.4	44.4	36.4	67.7	58.5	45.4	42.6	37.7
LSU in Shreveport	6450	28.3	25.5	27.3	27.3	38.6	45.0	45.7	46.5	46.5	46.8
University of New Orleans	5080	33.5	31.2	27.0	27.4	41.8	43.9	39.9	40.3	42.1	63.4
Southern University A&M(Including Law)	7423	43.2	42.2	42.1	39.9	45.1	43.0	43.6	36.0	26.5	38.1
Southern University at New Orleans	1486	39.3	38.0	35.0	38.1	65.3	35.0	45.7	44.8	45.1	71.9
PUBLIC TWO YEAR INSTITUTIONS											
LSU at Eunice	2314	44.3	43.3	38.7	35.4	39.8	52.4	67.9	69.0	53.3	69.3
Southern University at Shreveport	1910	38.3	34.2	40.1	32.3	45.7	65.7	37.1	25.9	41.7	45.5
Baton Rouge Community College	6543	61.3	59.2	56.2	47.2	61.6	72.7	67.9	58.6	57.7	43.2
Bossier Parish Community College	3350	48.9	45.6	45.3	50.5	62.1	54.2	54.9	52.9	50.7	57.8
Natchitoches	168	33.3					0.0				
Sabine Valley	38	50.9					0.0				
Delgado Community College	7733	48.6	45.4	21.3	19.3	42.6	37.0	37.2	22.5	16.8	66.0
Nunez Community College	1672	37.1	45.2	40.4	30.7	41.4	55.8	48.1	41.1	32.5	57.2
River Parishes Community College	1152	59.5	60.8	53.9	42.5	65.2	50.5	45.6	33.1	28.3	43.7
South Louisiana Community College	3127	65.5	68.5	64.2	69.9	67.3	66.6	63.0	55.8	58.0	58.7
Acadian	102	0.0	0.0	22.0	22.7	57.0	55.3	54.1	61.5	58.4	42.8
Charles B. Coreil	63	39.6	31.7	37.4	28.2	22.0	0.0	0.0	34.4	31.3	0.0
Evangeline	51	30.0	12.1	11.4	26.1	40.3	0.0	0.0	32.6	0.0	0.0
Gulf Area	159	76.7	57.4	85.4	73.3	66.5	57.0	54.0	40.4	29.9	57.4
Lafayette	64	69.9	60.3	58.6	60.6	86.4	67.7	63.1	58.9	62.8	76.8
T. H. Harris	393	77.8	67.3	57.8	72.5	76.1	87.0	71.9	45.9	76.7	69.5
Young Memorial	113	51.6	42.2	35.9	32.3	67.5	20.7	20.7	17.0	22.0	10.3
Louisiana Delta Community College	1235	38.5	43.0	41.0	42.8	71.6	20.2	23.1	19.4	18.5	44.0

L E. Fletcher Tech Community College	1577	63.9	54.2	41.9	34.3	54.7	27.6	23.0	25.3	30.9	22.8
Sowela Technical Community College	2082	44.3	32.8	44.9	49.1	52.4	52.3	41.7	41.9	41.9	47.3
Central LA Technical College											
Alexandria	490	30.9	37.3	31.9	32.7	42.3	0.0	0.0	0.0	0.0	36.1
Avoyelles	141	80.3	59.2	56.4	39.0	57.3	13.9	15.1	13.4	13.4	62.6
Huey P. Long	218	0.0	0.0	0.0	0.0	0.0	21.9	46.2	15.3	14.2	15.8
Shelby Jackson	138	12.5	18.0	15.0	19.8	48.0	0.0	0.0	0.0	0.0	0.0
Northwest LA Technical College	694	35.7	26.9	26.9	25.3		30.0	20.5	20.5	20.4	
Northshore Technical Community College											
Florida Parish	197	68.9	45.7	43.5	51.9		40.5	33.3	53.3	5.0	
Hammond	607	61.1	39.9	37.0	54.8		18.0	22.6	18.0	15.7	
Lacombe	1087	55.6	41.3	53.9	50.4		46.5	51.9	48.3	58.7	
Livingston	579	57.6	29.1	30.8	25.3		41.1	40.3	25.9	28.7	
Sullivan	408	26.9	18.3	33.0	37.8	56.2	0.0	0.0	0.0	34.8	30.6

*DOES NOT INCLUDE SATURDAY CLASSES

PERCENT STUDENT STATION UTILIZATION OF OCCUPIED CLASSROOMS (TABLE 7) 2024



**PERCENT STUDENT STATION UTILIZATION OF
OCCUPIED CLASS LABS (TABLE 7) 2024**

