



4th-Quarter LASTEM Advisory Council Meeting
Claiborne Building, Iowa Room
November 5, 2025

Welcome



**Commissioner Kim Hunter Reed
Louisiana Board of Regents
Chair, LASTEM Advisory Council**

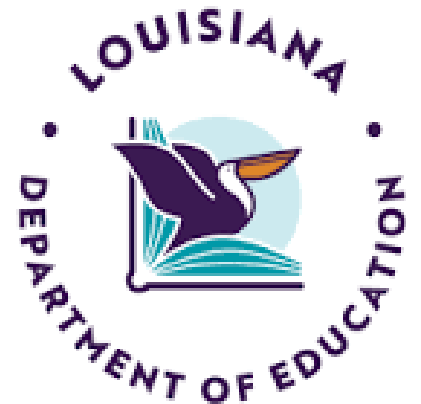
Agenda Items

Approval of the 3rd-Quarter Meeting Minutes

Agenda Items

Change in LASTEM Administration

- Carrie Robison, Deputy Commissioner for Research & Sponsored Initiatives, BoR
- Jamie Mixon, Computer Science and STEM Supervisor, LDOE
- Osmar Padilla, Assistant Secretary, LAWorks





LASTEM: POWERING LOUISIANA'S FUTURE

CONNECTING EDUCATION, INNOVATION, AND WORKFORCE OPPORTUNITY

NOVEMBER 2025

WHY LASTEM MATTERS FOR LOUISIANA'S FUTURE

STEM DRIVES LOUISIANA'S ECONOMY

- STEM capability is the foundation of Louisiana's modern workforce — essential to industries like energy, manufacturing, healthcare, construction, and technology.
- STEM strengthens critical, technical, and digital skills that employers rely on for innovation and productivity.
- Expanding access to STEM learning and training equips both students and workers to adapt to changing technologies and fill high-demand jobs.
- LaSTEM connects education, training, and work — supporting Louisiana's long-term competitiveness and prosperity.



WHY LASTEM MATTERS FOR CONNECTING LEARNING AND WORK

EDUCATION → TRAINING → EMPLOYMENT → OPPORTUNITY

- The Board of Regents and the LaSTEM network have built a strong foundation for STEM learning and educator development across Louisiana.
- As LaSTEM transitions to Louisiana Works, that foundation becomes the bridge connecting education, training, and career opportunity.
- Our focus is helping Louisianans of all ages turn learning into skills, credentials, and quality jobs that meet industry demand.
- Together, we will strengthen LaSTEM as a statewide system that links education, workforce, and industry to support Louisiana's long-term economic growth.



HOW LASTEM ALIGNS WITH OUR PRIORITIES

MATCHING VISION WITH ACTION

Qualified Workforce

Regional STEM Centers align education and training to high-demand occupations and emerging technologies.

American Dream

Centers open doors for learners of all ages to pursue high-demand, high-wage careers through STEM pathways.

Integrated System

Centers act as regional connectors linking the workforce system with employers into one coordinated network.



WHAT'S NEW?

EXPANDING REACH, STRENGTHENING ALIGNMENT, AND TRACKING RESULTS

1. Expanded Scope Across the Workforce Continuum

- Centers will serve the full education-to-employment pathway: from early learning to adult upskilling and career transitions.
- Emphasis on connecting students, educators, and workers to real career opportunities in high-demand sectors.

2. Regional Needs Assessment

- Each Center will complete a Year 1 assessment identifying regional gaps in STEM education, training, and workforce readiness.
- Findings will guide targeted implementation plans for Years 2–3.

3. Updated Performance Metrics

- Number of work-based learning opportunities (internships, apprenticeships, externships) created
- Evidence of improved learner outcomes (skill gains, employment, or career advancement)
- Employer engagement outcomes, such as industry partnerships, sponsorships, or curriculum alignment



Our Goals Moving Forward

- Strengthen collaboration across education, workforce, and industry.
- Expand LaSTEM's reach across the full workforce development continuum.
- Focus on measurable results and career outcomes.
- Build a coordinated statewide network that drives impact.

About the RFA

- Launch: November 5, 2025
- Applications Due: January 2, 2026
- Designations Announced: February 2026
- CEAs Begin: July 1, 2026
- Each Center will:
 - Complete a Regional Needs Assessment in Year 1
 - Implement regional priorities in Years 2–3
 - Report progress through performance-based measures



LOOKING AHEAD

Partnerships & Performance

Visit LAWorks.net/LaSTEM to access the RFA, submit an application, and learn more about the 2026–2029 Regional STEM Center designation process.

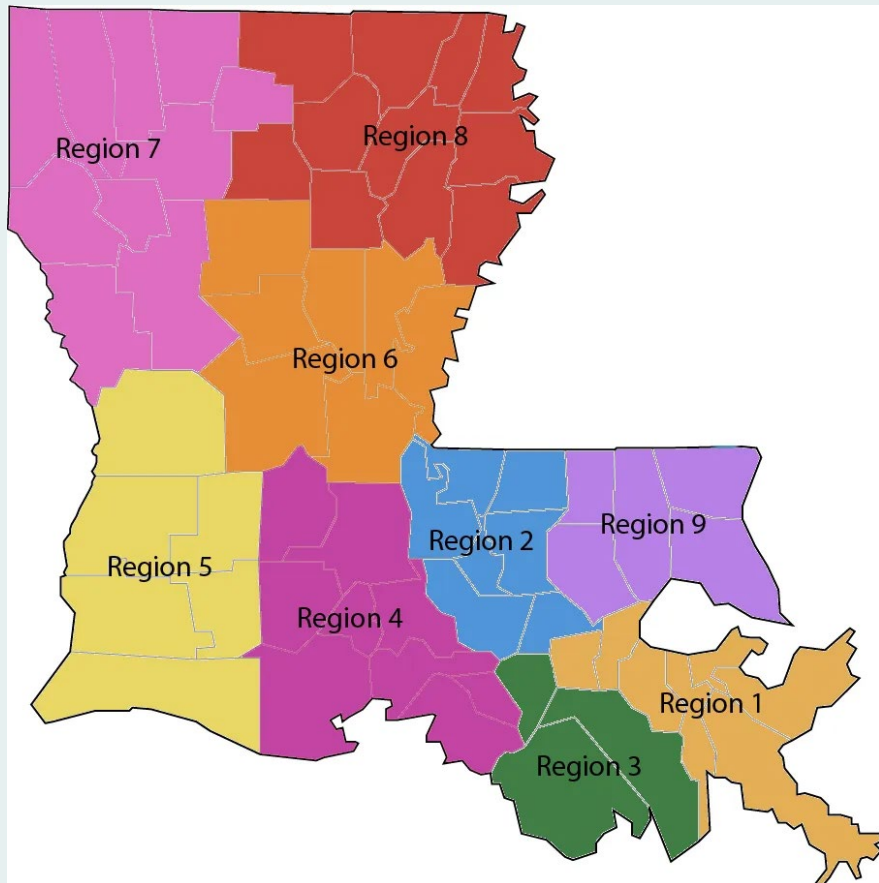


THANK YOU

Osmar Padilla, Deputy Secretary

1001 North 23rd St., Baton Rouge, LA 70802
LAWORKS.NET

Northwest LASTEM Innovation Center - Region 7
At Bossier Parish Community College (BPCC)
Heather Kleiner, Ph.D. and Jennifer Johnson



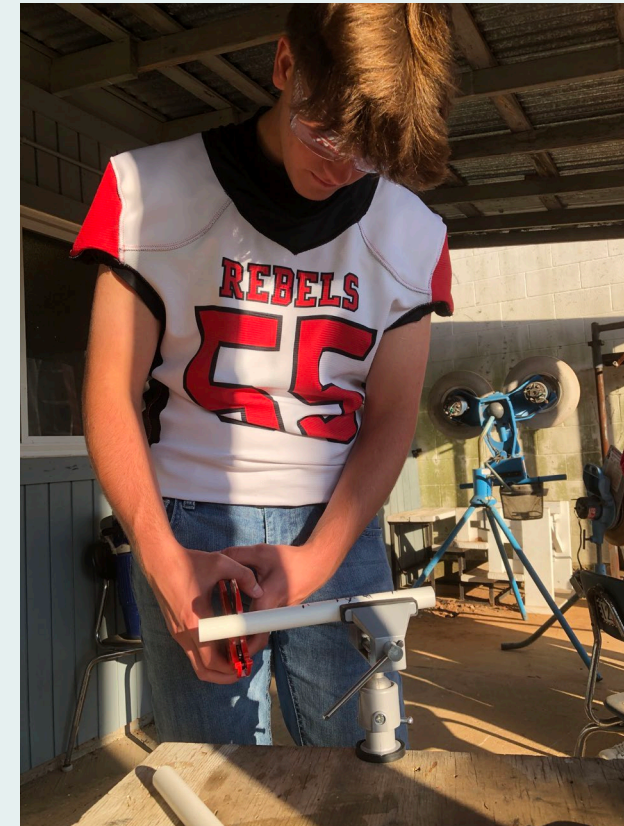
RSC7 re-locates to Bossier Parish Community College (BPPCC), part of LCTCS



2-year college has programs with industry-based credentials, internships, and community engagement including summer camps for kids.



DSEC SeaPerch Underwater Robotics Program



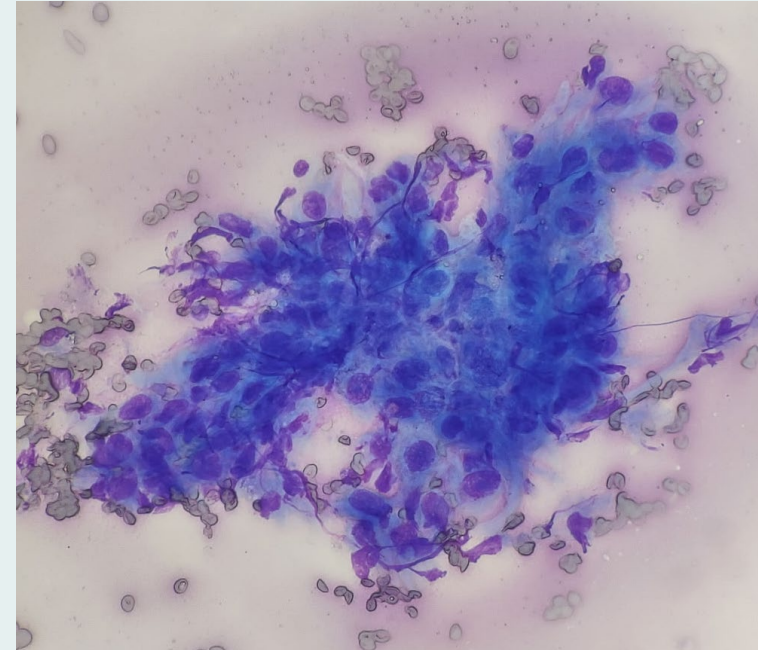
Jennifer with Dr. Hunter Brown, Principal of Riverdale Academy (Coushatta) (L) & student (Rt)
A Teacher PD workshop with 14 more educators held Sat. Nov. 1 at BPCC.



Other Opportunities and Inroads



Dr. Gil Noam & Kristen Lewis-Warner (PEAR) at SLECoP



**Cytology connections made with
LA Works & Ochsner**

- *Save money from outsourcing
- *Faster turnaround time
- *More jobs in-state



Educator Engagement – from Space for Workshops, Mentoring Robotics, to the Congressional App Challenge!



ML-Bots PD Workshop from Bayou STEM at BPCC



Benton Middle Schoolers submit Congressional App Challenge 2025 “SafER Connections” project



Education Outreach – *FIRST*® LA Grows!



FIRST LEGO League Teacher PD Workshop

BPX provided \$25,250 to *FIRST* Louisiana Mississippi, Inc. for 2024-2025

- supported 31 FIRST teams in Caddo Parish
- impacting approximately 220 elementary, middle and high school students in Louisiana.
 - 13 *FIRST* LEGO League Explore teams (2nd-4th grade)
 - 16 *FIRST* LEGO League Challenge Teams (4th-8th grade)
 - 2 *FIRST* Tech Challenge teams (7th-12th grade)
- **55% increase** in teams over the 20 teams participating in 2023-24 that were supported by BPX.



Education Outreach – *FIRST*® LA Grows!

FIRST® Robotics Competition (FRC) teams

- Southwood High School Team Talos #1818
- Caddo Career & Technical Center
Community team, Circuit Breakers #9708



2025 -2026 – BPX sponsored teams now include

- **New!** Caddo Parish Community based *FIRST*® LEGO League Challenge Team (4th-8th grade)
- **New!** Bossier Parish, middle school *FIRST*® LEGO League Challenge Teams (4th-8th grade)
- **New!** Caddo Parish Community based *FIRST*® Tech Challenge team (7th – 12th grade)

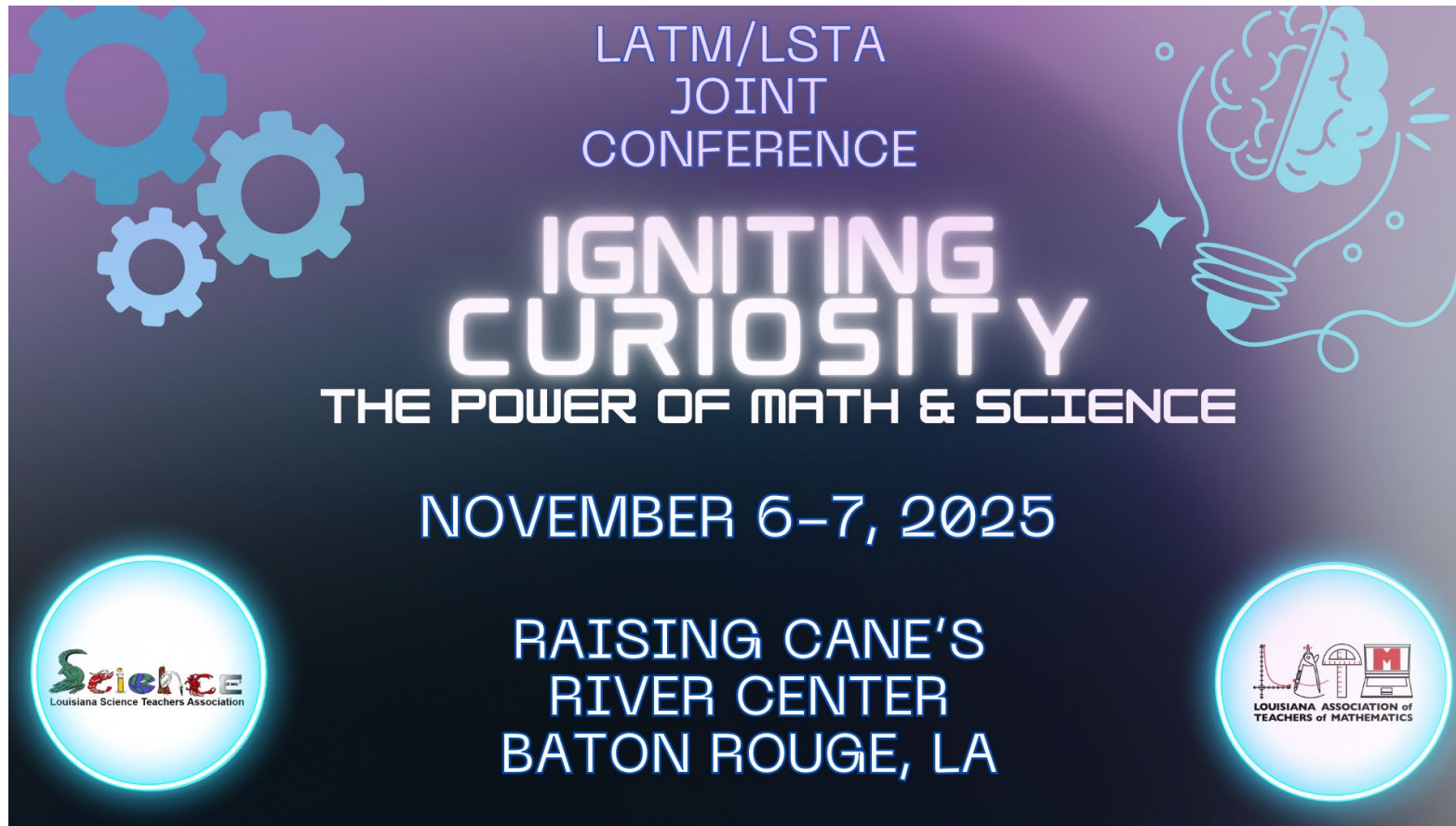


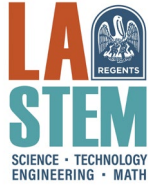
FTC #21821
Repairs before
the next match!



Agenda Items

LASTEM Regional Center Participation in LSTA/LATM Joint Conference





Other Business/Adjournment

See you on February 3rd at Bossier Parish Community College for the Q1 LASTEM Advisory Council Meeting!