

Louisiana Board of Regents



BOARD *of* REGENTS
STATE OF LOUISIANA

Meeting as a Committee of the Whole

September 23, 2020
10:30 a.m.

AGENDA ITEM II.

Roll Call



AGENDA ITEM III.

Certification for Virtual Meeting



AGENDA ITEM IV.

Public Comments



AGENDA ITEM V.

Approval of Minutes
from August 13, 2020



AGENDA ITEM VI.

Master Plan Year One Review and the Path Forward



AGENDA ITEM VII.

Reports and Recommendations





BOARD *of* REGENTS
STATE OF LOUISIANA

Finance

September 23, 2020

Terrence Ginn
Matthew LaBruyere

AGENDA ITEM VII.A.1.

Review and Acceptance of FY 2020-2021 Operating Budgets

Beginning Operating	FY 2020	FY 2021*	Difference	% Change
State General Fund (SGF)	\$1,062,048,947	\$1,068,395,250	\$6,346,303	0.6%
Statutory Dedications	\$153,967,708	\$144,129,895	(\$9,837,813)	-6.4%
Interagency Transfers (IAT)	\$17,979,768	\$25,017,256	\$7,037,488	39.1%
Self-generated Revenue (SGR)	\$1,544,690,041	\$1,580,606,057	\$35,916,016	2.3%
Federal	\$70,217,796	\$70,217,796	\$0	0.0%
Total	\$2,848,904,260	\$2,888,366,254	\$39,461,994	1.4%
State Funds (SGF + Statutory Dedications)	\$1,216,016,655	\$1,212,525,145	(\$3,491,510)	-0.3%

*FY21 SGF includes \$100M in funds made available through CARES Act dollars in FY20 and FY21.

- Major funding changes in FY21 include a swap of \$100M in SGF for federal CARES Act funds via IAT in FY20 to mitigate reductions to higher education, Reduction to higher education of \$21.7M, \$10M to fully fund the TOPS program, \$2M for START and GO Grants, and \$16M for specialized institutions.
- The changes in statutory dedications include an increase of \$2M to BOR Support Fund, a reduction of SELF Fund (\$6.2M), TOPS Fund (\$1.8M) and Tobacco Tax Fund (\$0.4M) based on Revenue Estimating Conference (REC) forecasts and a decrease of \$3.3M in Higher Education Initiatives Fund for that was allocated for LCTCS accreditation.
- The increase of \$36M in self-generated revenue is due to increases in fees as a result of Act 293 of 2017 (fee autonomy).
- The increase to IAT (\$5.3M) is for CARES Act and LOUIS.
- \$962M represents approximately 12% of the total SGF forecasted to be available for current year, FY21 (\$962M/\$9.18B = 11.6%). For context, in FY09 SGF represented approximately 18% of the total SGF appropriated in the General Appropriations Bill.



Board of Regents and System Operating Budgets

2020-2021 Operating Budget*	BOR**	LSU System	SU System	UL System	LCTC System	Total
State General Fund (SGF)	\$322,111,892	\$330,729,589	\$43,442,284	\$169,988,977	\$102,201,391	\$968,474,132
Statutory Dedications	\$82,124,386	\$27,104,716	\$4,228,516	\$15,438,991	\$15,233,286	\$144,129,895
Interagency Transfers (IAT)	\$14,114,702	\$7,614,116	\$3,028,515	\$259,923	\$0	\$25,017,256
Self-generated Revenue (SGR)	\$12,030,299	\$619,757,120	\$101,105,493	\$672,783,145	\$174,930,000	\$1,580,606,057
Federal	\$53,545,312	\$13,018,275	\$3,654,209	\$0	\$0	\$70,217,796
Total	\$483,926,591	\$998,223,816	\$155,459,017	\$858,471,036	\$292,364,677	\$2,788,445,136
<i>*For FY21 \$100M in SGF was swapped for funds made available through CARES Act dollars in FY20 and FY21.</i>						
<i>**Board of Regents budget includes LOSFA and LUMCON programs.</i>						



STAFF RECOMMENDATION

Senior Staff recommends that the Board accept the Fiscal Year 2020-2021 Operating Budgets.





BOARD *of* REGENTS
STATE OF LOUISIANA

Facilities and Property September 23, 2020

Chris Herring

VII.B.1. HURRICANE LAURA UPDATE



VII.B.1. HURRICANE LAURA UPDATE

- 13 campus sites reported minor to severe damages with SOWELA and McNeese State being the most adversely affected.
- Damages include roofing damage, water intrusion and flooding, downed trees and signage, extensive debris clean-up, and damage to athletics facilities.
- The Office of Risk Management (ORM) has crews on-site in Lake Charles assessing losses. Crews were released shortly after the storm to secure facilities and roofs as well as dry out buildings.
- Commissioner and staff have met with various stakeholders early in the process to discuss avoiding delays experienced during Katrina/Rita recovery.
- Visits conducted to McNeese, SOWELA, LSU-A, and LSU-E.





BOARD *of* REGENTS
STATE OF LOUISIANA

Academic & Student Affairs September 23, 2020

Dr. Susannah Craig

AGENDA ITEM VII.C.1.

CONSENT AGENDA

- a. Termination of the Institute for Advanced Materials-LSU A&M
- b. Reauthorization of Existing Research Unit
 - i. Center for Advancement of Meat Production & Processing - McNeese
 - ii. National Center for Advanced Manufacturing – LSU A&M
 - iii. Precision Agriculture & Unmanned Aircraft Systems Research & Applications Center – ULM
 - iv. Pugh Institute for Justice – LSU A&M



AGENDA ITEM VII.C.1.

CONSENT AGENDA CONTINUED

- c. Progress Reports for Conditionally Approved Academic Programs
- d. Routine Staff Approvals

STAFF RECOMMENDATION

Senior Staff recommends that the Board approve the items on the consent agenda.



AGENDA ITEMS VII.C.2. AND VII.C.3.

2. Academic Programs

a. Program Proposals

- i. OTD Occupation Therapy – LSU HSC-S
- ii. PhD Construction Management – LSU A&M

3. Centers and Institutes

a. Full Authorization of Conditionally Approved Research Units

- i. Kathleen Babineaux Blanco Public Policy Center –
UL Lafayette
- ii. Urban Entrepreneurship & Policy Institute - UNO



AGENDA ITEMS VII.C.2. AND VII.C.3.

STAFF RECOMMENDATION

Senior Staff recommends that the Board:

- a. Conditionally approve the proposed OTD in Occupation Therapy at LSU Health Sciences Center in Shreveport and PhD in Construction Management at LSU A&M, with progress reports due July 1, 2022; and
- b. Approve full authorization of the Kathleen Babineaux Blanco Public Policy Center at UL Lafayette, and the Urban Entrepreneurship & Policy Institute at UNO. Requests for continued authorization are due October 1, 2025.





BOARD *of* REGENTS
STATE OF LOUISIANA

Planning, Research & Performance September 23, 2020

Dr. Susannah Craig
Dr. Randall Brumfield

AGENDA ITEM VII.D.1.

CONSENT AGENDA

- a. R.S. 17:1808 (Licensure)
 - i. Initial License
 - (a) Remington College – Garland, TX
- b. State Authorization Reciprocity Agreement (SARA)
State Renewal (Louisiana)



AGENDA ITEM VII.D.1

CONSENT AGENDA CONTINUED

c. State Authorization Reciprocity Agreement (SARA)

i. Initial Applications

(a) LSU Health Sciences Center – New Orleans

(b) Nicholls State University

(c) Southern University at New Orleans

ii. Renewal Application

(a) Xavier University of Louisiana



AGENDA ITEM VII.D.1.

CONSENT AGENDA (CONTINUED)

STAFF RECOMMENDATION

Senior Staff recommends the Board:

- a. **Approve the items on the Consent Agenda; and**
- b. **Grant authority to Planning, Research and Performance staff to approve all future routine NC-SARA renewal applications, with annual updates on approved renewals provided to the Board.**



AGENDA ITEM VII.D.2.

Defining Postsecondary Quality Credentials of Value



AGENDA ITEM VII.D.2.

- To develop the talent pipeline needed for Louisiana to prosper, the Master Plan adopted by the Board in 2019 recognizes that 60% of working adults need a postsecondary credential by 2030.
- Postsecondary credentials can be academic or non-academic, as both serve an integral role in supporting Louisiana's workforce needs.
- Currently, there is no definition adopted by the Board to identify credentials that are quality, lead to a viable career path, and provide a living wage.



AGENDA ITEM VII.D.2.

- Recognizing the need to identify these credentials, Regents engaged System CAOs, agencies, and external organizations, such as National Skills Coalition, to develop clear criteria.
- Improved clarity and transparency was achieved from this effort to bring the visibility needed for the value of different types of credentials to the workforce and to the student.
- Continued work will remain with education, agency, and industry partners to implement this criteria and to recommend improvement when needed.



AGENDA ITEM VII.D.2.

In addition to academic degrees, a non-academic credential, such as a technical certificate, will be considered a “**Quality Postsecondary Credential of Value**” and be counted toward the Board’s completion goals if it meets the following five standards:



AGENDA ITEM VII.D.2.

- It provides valid, reliable, and transparent evidence of the competencies mastered by credential holders and is conferred by an entity recognized by business and industry and/or the State of Louisiana.
- It directly aligns to an occupation that has a 3-, 4-, or 5-star rating as defined by the Louisiana Workforce Commission, which is based on job demand, projected job growth, and earnings.



AGENDA ITEM VII.D.2.

- It leads directly to an occupation that, at a minimum, maintains a 20% wage premium over a high school diploma in Louisiana.
- Evidence can be provided for employment and wage outcomes.
- It meets these criteria as a stand-alone credential, independent of another credential.

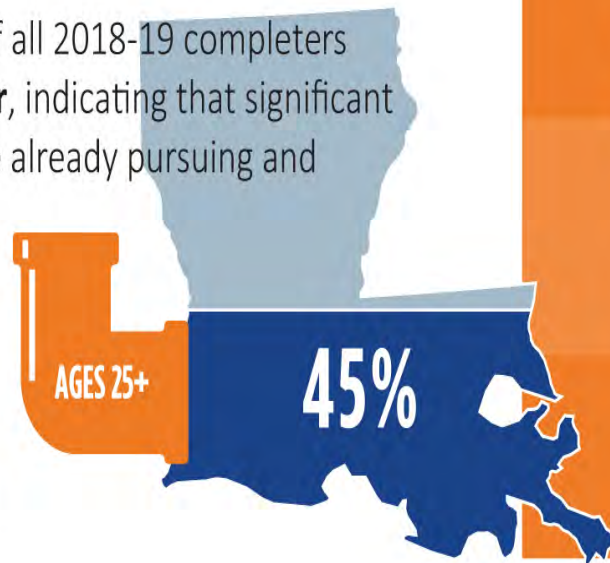


AGENDA ITEM VII.D.2.

INCREASING ADULT COMPLETERS

Approximately **45%** of all 2018-19 completers were aged **25 or older**, indicating that significant numbers of adults are already pursuing and earning credentials, allowing them to train and retrain for prosperity.

Source: Statewide Student Profile System, Louisiana Board of Regents



Despite the massive disruptions caused by the COVID-19 pandemic, work around the Master Plan is already showing success in boosting completers and closing the gap.



“Non-degree credentials are a key component of state credential attainment goals. That's why it's important for states to have clear processes and criteria to determine which non-degree credentials provide value to students, workers, and businesses.” National Skills Coalition



NATIONAL SKILLS COALITION
Every worker. Every industry. A strong economy.



Lumina[™]
FOUNDATION

“These credentials can change lives, raise incomes and brighten futures of millions of Americans -- aiding the nation’s questions to increase opportunity and talent development.” Courtney Brown, Vice President of Strategic Impact, Lumina Foundation



Board of Regents

STAFF RECOMMENDATION

Senior Staff recommends the Board approve the Postsecondary Quality Credentials of Value Policy, which recognizes the role of academic and non-degree credentials in Louisiana's economy and workforce and will provide the Board with clarity and transparency for purposes related to attainment tracking and reporting.





BOARD of REGENTS
STATE OF LOUISIANA

Statewide Programs August 13, 2020

Dr. Sujuan Boutté

AGENDA ITEM VII.E.1.

Consent Agenda

a. Approval of TOPS Exceptions

Requests for exception to the TOPS regulatory provisions that require students to remain continuously enrolled and to earn the annual credit hours required during the academic year.



AGENDA ITEM VII.E.1.

Consent Agenda

b. Approval of TOPS Exceptions to Provide Documentation

Approval of exception to provide documentation of initial TOPS eligibility no later than January 15 of the year following the student's final FAFSA deadline.



AGENDA ITEM VII.E.1.

Consent Agenda

c. Approval of Emergency Rules – Exceptions for Hurricane Laura

Approval of Emergency Rules to provide exceptions for TOPS, Rockefeller State Wildlife Scholarship, and GO Youth Challenge recipients who were affected by Hurricane Laura and to provide deferments for those students who are currently in repayment status for Rockefeller State Wildlife Scholarship Program Recipients and TOPS Teacher Recipients.



RECOMMENDATION

**The LOSFA Advisory Board
recommends approval of the Consent
Agenda Items.**



AGENDA ITEM VI.

Master Plan Year One Review and the Path Forward





BOARD of REGENTS
STATE OF LOUISIANA

LOUISIANA PROSPERS

Moving the Master Plan Forward

THE AUDACITY OF HIGH EXPECTATIONS

Our determination at the Board of Regents is to make the next decade different from the last, changing higher education in more substantial ways than just reinvestment. The Regents will show the way to Educate, Innovate, and Collaborate, in order to double the number of working adults in Louisiana with meaningful, market-relevant postsecondary credentials by 2030.

It is the audacity of higher expectations for higher education. And it begins with this new Master Plan.



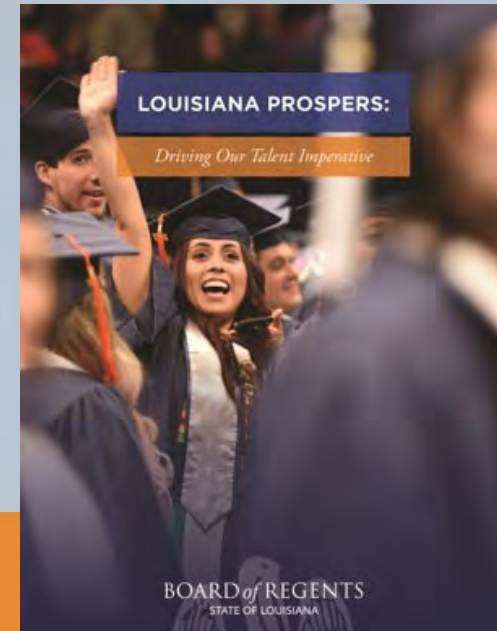
BOARD of REGENTS
STATE OF LOUISIANA

Attainment

GOAL:

60% x 2030

Louisiana's working-age population with a postsecondary credential by 2030



GAP

45,000

40,000 Annual
Credentials
Produced in
2018

Double the Numbers

GOAL:

85,000

Annual Credentials
Produced in 2030



BOARD of REGENTS
STATE OF LOUISIANA

THREE-PART FOCUS



BOARD of REGENTS
STATE OF LOUISIANA

INCREASING ATTAINMENT
MEANS THE STATE MUST:



expand access to and
success in completing
postsecondary education



eliminate persistent and
damaging equity gaps



significantly increase the
education level for adults

Today's Student

Traditional to
Post-Secondary



First in Family



Working Parent in
Need of Training



Incarcerated/
Formerly
Incarcerated



Foster Youth



Adults in
Rural Areas



Veterans

MORE THAN DOUBLING
THE NUMBER



BOARD of REGENTS
STATE OF LOUISIANA

Talent Commitment

Double the number of college completions by 2030.



Educate

Dual Enrollment

Improved
Outcomes

Affordable Access



Innovate

New Systems of Learning -
Worked-Based Learning

Clear Pathways to Success

Research and Development



Collaborate

Integrated Relationships &
Alignment: PK-12, Higher Ed
and Workforce

Public - Private Partnerships

Louisiana Prospers



BOARD of REGENTS
STATE OF LOUISIANA

KICKING OFF THE WORK: YEAR ONE SUCCESS



BOARD of REGENTS
STATE OF LOUISIANA

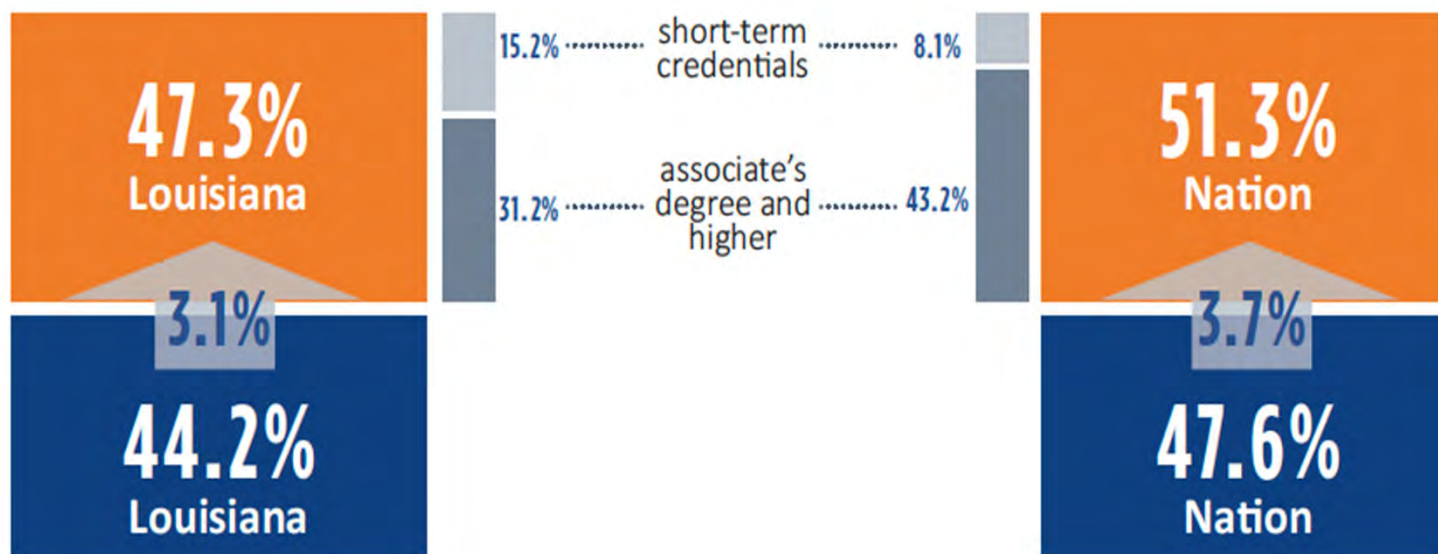
LOUISIANA'S CHALLENGE

By 2020, the Georgetown Center projections indicate that 65% of jobs nationally, and 56% of jobs in Louisiana, will require education beyond a high school diploma.

EDUCATIONAL ATTAINMENT

State Increased but Lagging the Nation

GOAL: 60% x 2030



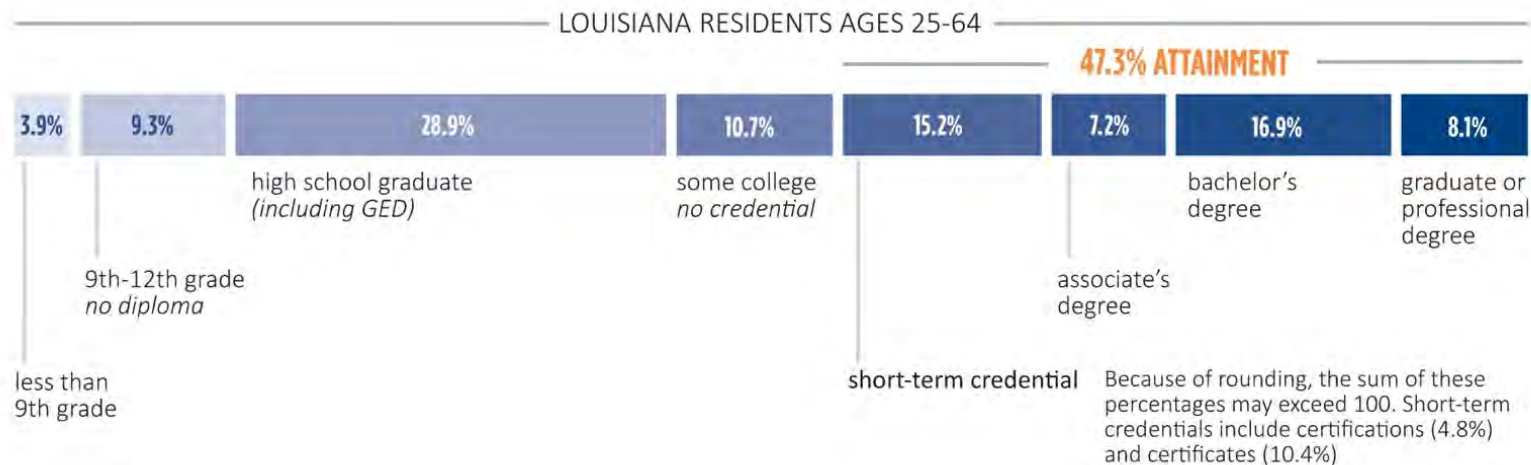
BOARD of REGENTS
STATE OF LOUISIANA

DATA COMPARISONS

GETTING TO 60%

**12.7% attainment increase
needed to reach 60% goal**

Approximately 53% of Louisiana's population must be positioned to graduate with a postsecondary degree or credential. Our job moving forward is to help them overcome any barrier to success.

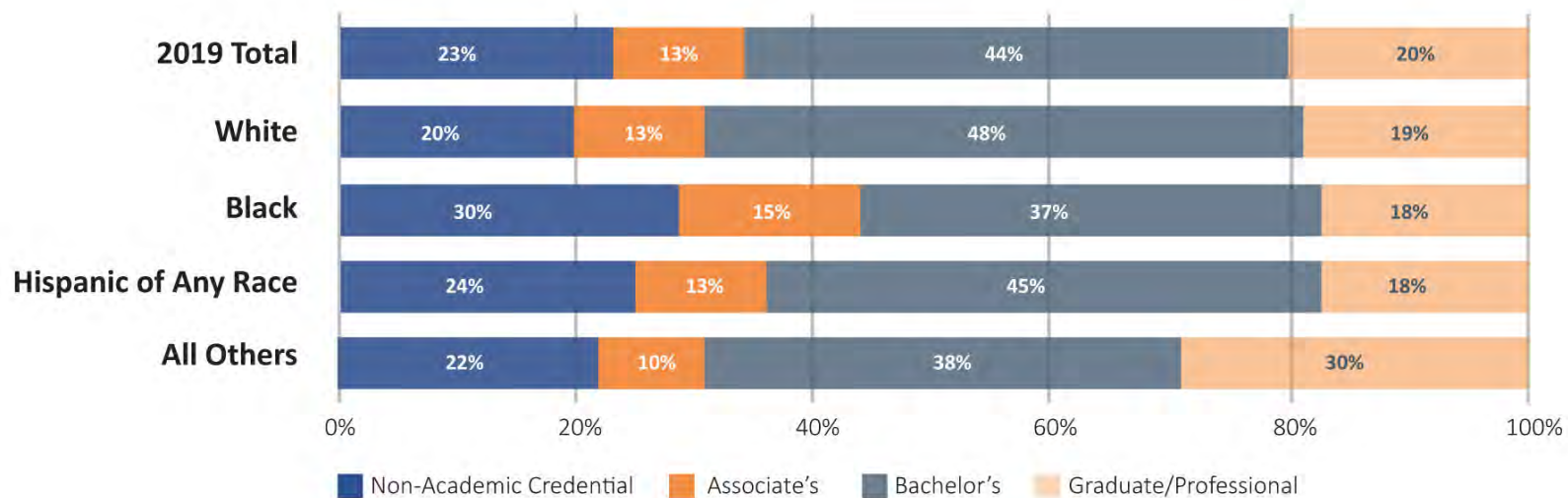


BOARD of REGENTS
STATE of LOUISIANA

DATA COMPARISONS

ERASING EQUITY GAPS

The mix of credentials earned shows the need for the emphasis on equity in success, ensuring that all populations can earn the type and level of credential that aligns with their life and career goals.

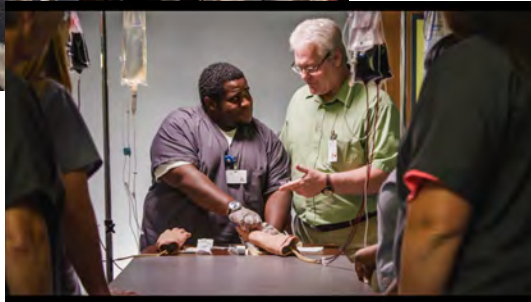


Credential completion is increasing across all populations and at all levels of education. Louisiana is ramping up support for the rapid growth of credentials at the associate's level or below as a pathway to high-demand, high-wage, life-changing jobs for COVID-19 displaced workers.

YEAR ONE STRATEGY WINS



INDICATORS ARE RISING



**Total
Enrollment**

**Minority
Students**

**Pell
Students**

REACHING THE GOAL

Completion Trend by Race/Ethnicity

Graduation Year	Grand Total	White	Black	Hispanic of any race	All Others
2017-18	37,687	21,752	9,158	1,708	5,069
2018-19	41,291	23,661	9,980	2,049	5,601
2019-20	44,147	25,511	10,803	2,297	5,536

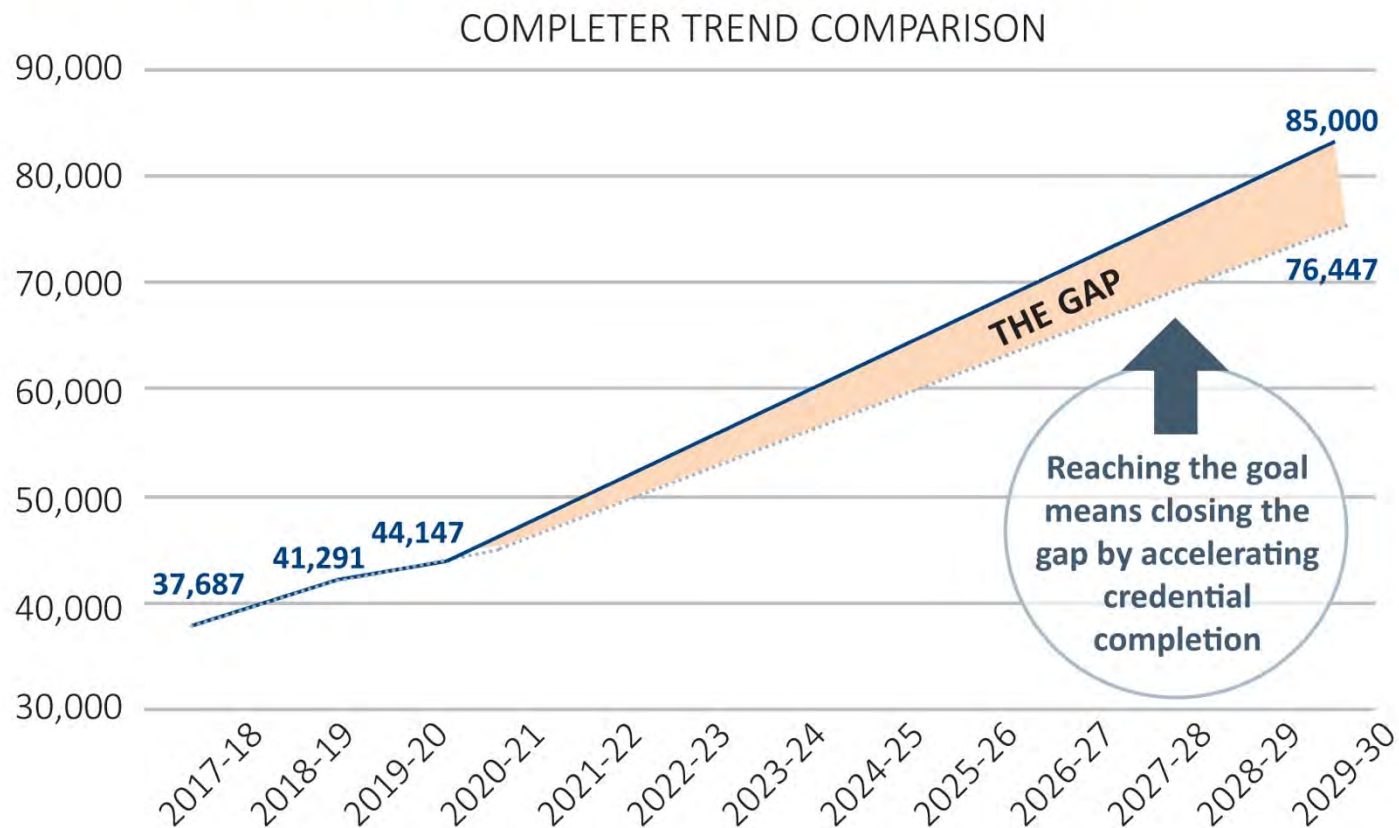
REACHING THE GOAL

Adult Undergraduate Completion Trend by Race/Ethnicity

Graduation Year	Grand Total	White	Black	Hispanic of Any Race	All Others
2017-18	10,720	5,241	3,477	513	1,489
2018-19	11,903	5,755	3,866	621	1,661
2019-20	12,439	6,144	4,129	667	1,499

DATA COMPARISONS

MORE THAN DOUBLING THE NUMBER OF CREDENTIALS



BOARD of REGENTS
STATE of LOUISIANA

CAPITALIZING ON OUR MOMENTUM



BOARD of REGENTS
STATE OF LOUISIANA

TANGIBLE INVESTMENT IN THE GOAL

LEGISLATIVE:
TOPS, GO, START,
RESEARCH,
COVID CUTS
MINIMIZED

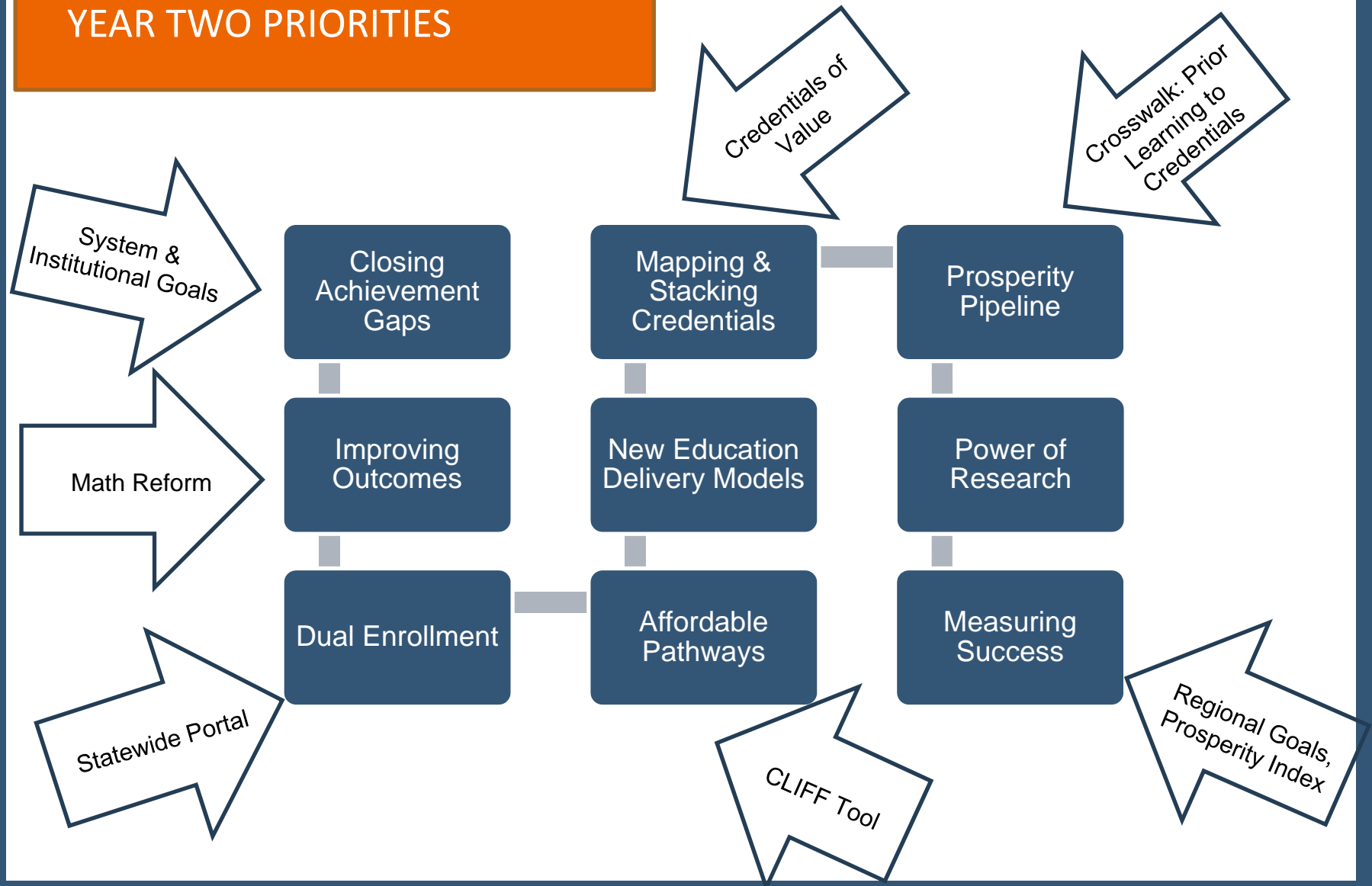
GRANTS:
ATTAINMENT,
STUDENT SUCCESS,
RESEARCH

FEDERAL:
DIGITAL DIVIDE,
WORKFORCE
DEVELOPMENT



Year-Two Priorities & External Funding Sources

YEAR TWO PRIORITIES



COVID IMPACT

- Enrollment and persistence
- Learning modes
- Digital literacy
- Workforce shifts (reskilling & upskilling)



BOARD of REGENTS
STATE OF LOUISIANA

CLOSING THOUGHTS

- Year 1 achievements provide the foundation for future success.
- Promising gains seen in student outcomes, but work remains to close equity gaps.
- Comprehensive scope of priorities to be pursued in Year 2.
- Master Plan efforts must be accelerated to ensure Louisiana prospers.



BOARD of REGENTS
STATE OF LOUISIANA

AGENDA ITEM VIII.

Chairman's Comments



Agenda Item IX.

Other Business



Agenda Item X.

Adjournment

